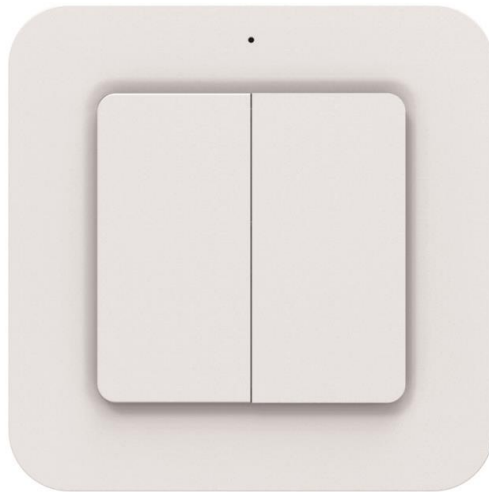




MANUAL



2 GANGS DELAY TIMER WALL SWITCH MWST-1812

CONTENTS

1. Overview and features	Page 2.
2. Diagrams	Page 3.
3. Battery	Page 4.
4. Mounting on surface	Page 6.
5. Pairing / Un-pairing device	Page 9.
6. Operation	Page 12.
7. Delay Timer	Page 16.
8. Specifications	Page 18.

1. Overview and features

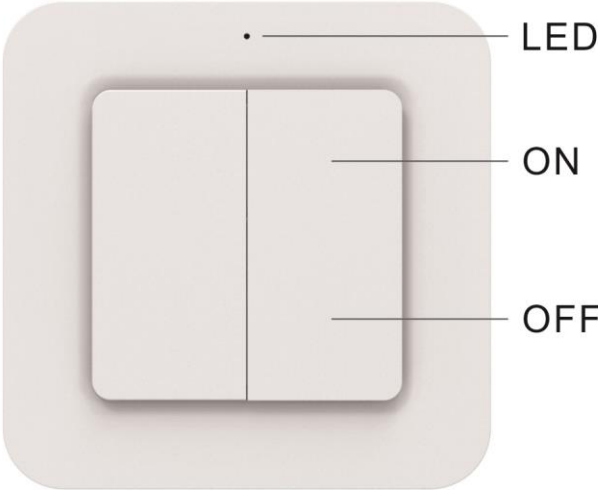
2 gangs rocker button wireless delay timer function wall switch that plays a key role in enhancing the convince, comfort and energy efficiency of smart homes. Easy dimming methods to take control of the load level.

Main features;

- Compatible to L and M series.
- Quick easy way for direct maximum and minimum brightness level setup.
- 6 Delay timer function – 0, 5s, 1m, 10m, 30m, 60m.
- 3V CR2032 battery operation with low battery indication.
- Red and Green LED indication representing different operation status.
- Easy mounting with screws or use adhesive tape on flat surface.

2. Diagrams.

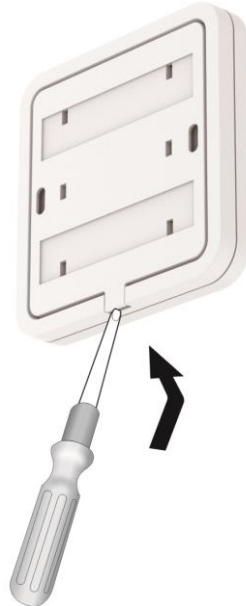
Notes for the diagrams:



3. Battery

Red LED will flash once every 4 seconds to indicate the battery is low

1. With a slot screwdriver gently insert into bottom slot then lift open the back cabinet.



2. Remove back cabinet.



3. Remove battery insulation strip. (First time use only)



4. Or replace with a new 3V CR2032 battery making sure the positive symbol is facing upwards.



LITHIUM BATTERY CAUTION:

Risk of Explosion if battery is replaced by an incorrect type. Dispose of used batteries according to the environment protection rules.

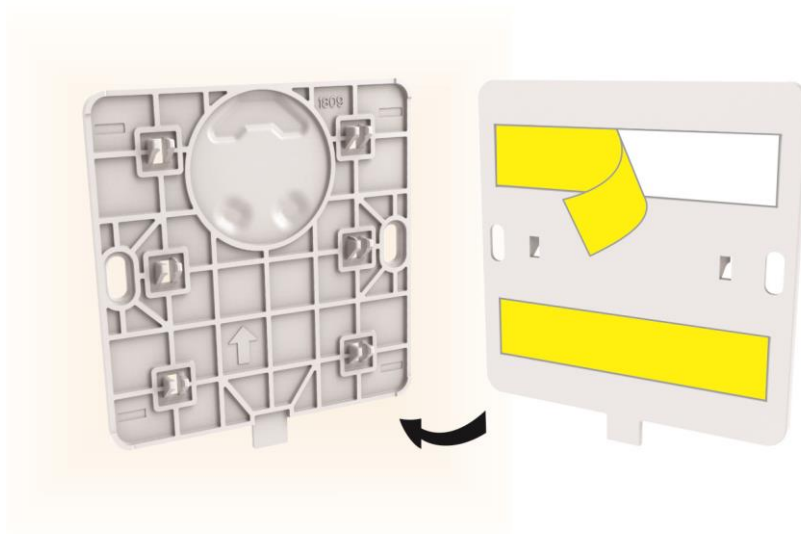
4. Mounting On Surface

Wireless wall switch has 2 ways of mounting on surface.

Method 1.

With 3M double sided adhesive tape enclosed in the accessory pack.

1. Correctly position the adhesive tape on the back cabinet.
2. Stick the back cabinet onto surface making sure the arrow is facing upwards.



3. Behind the rocker button there is also an arrow.
Make sure both arrows are facing up wards.



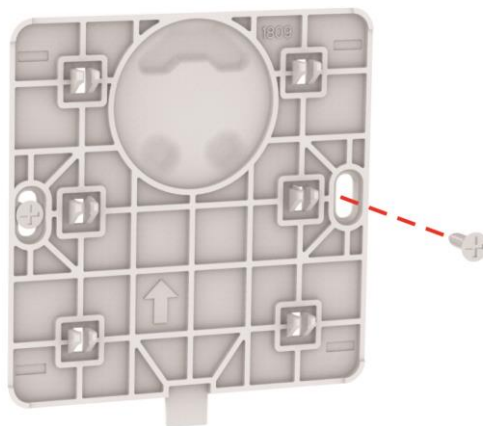
4. Align the rocker button onto the 6 clips and with a little force push forward making sure 'click' sound is heard.



Method 2.

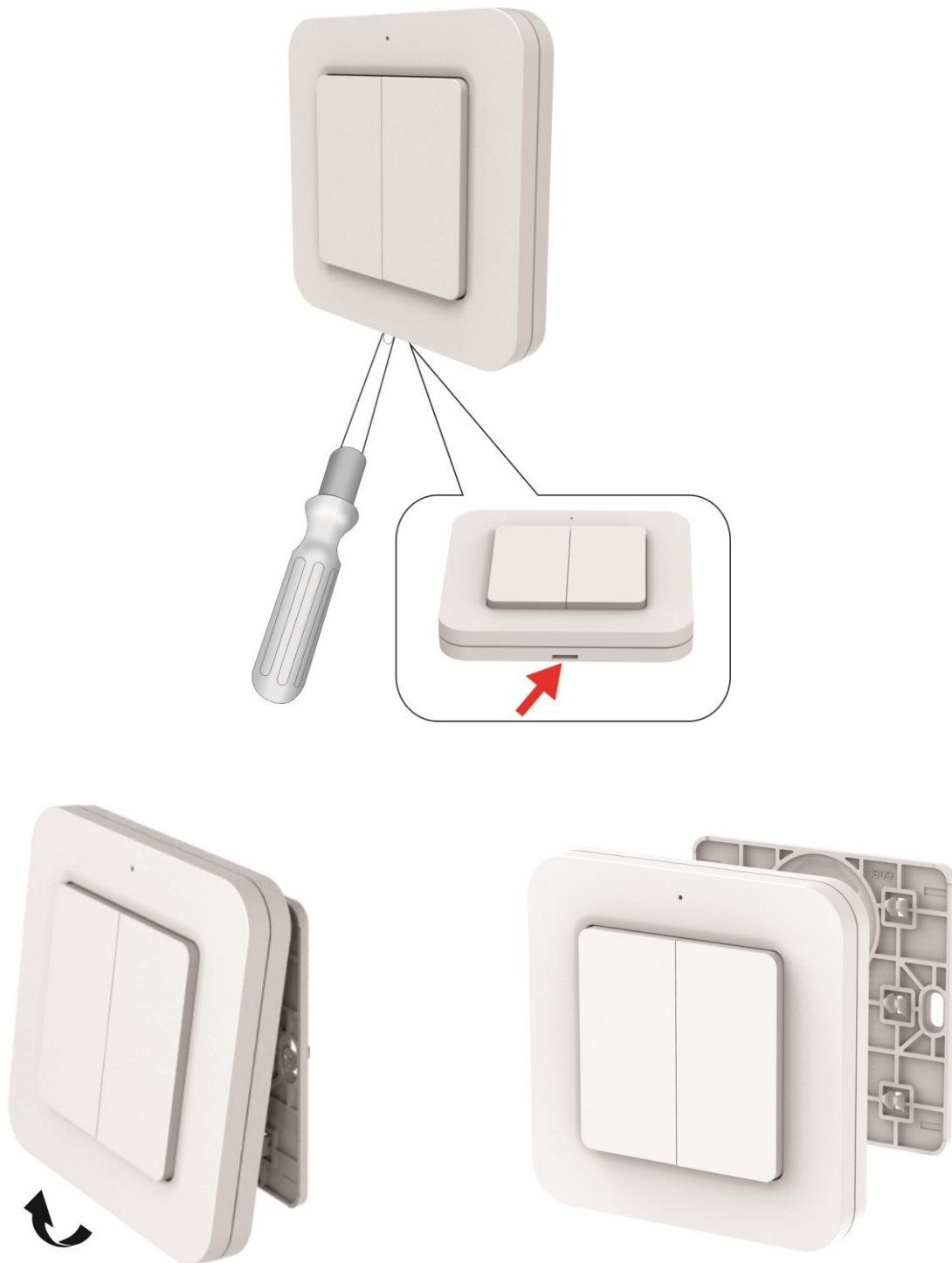
Mounting with 2 screws enclosed in the accessory pack:

1. Position back cabinet onto surface making sure the arrow is facing up then affix tightly with 2 screws.



2. Align the rocker button onto the 6 clips and with a little force push forward making sure 'click' sound is heard.

To remove the rocker button, with a slot screwdriver gently insert into bottom slot then lift up the rocker button.



5. Pairing / Un-pairing Device

L Series pairing method.

Learning mode lasts for 12 seconds; if no signal is received from remote control / wall switch between this time then the receiver will automatically exit learning mode without pairing any device.

To exit learning mode manually, simply press the '**Learn**' button again.

To Pair: (Receiver can store up to 6 memories.)

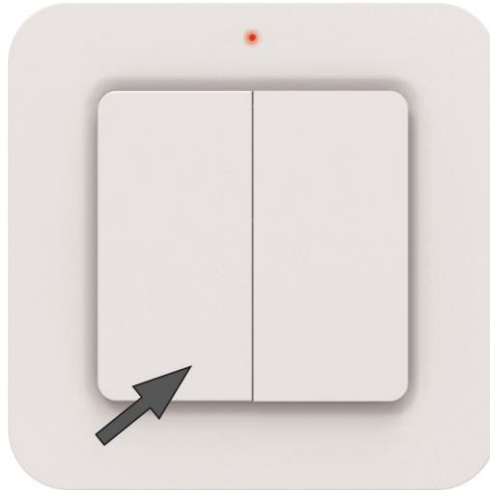
1. On the L series receiver press the '**Learn**' button once (LED on receiver will flash), this will enter learning mode.
2. With the wireless wall switch press '**ON**' button once to pair, green LED will flash once and LED on receiver will flash twice to confirm that pairing is successful and complete.



! If during learning mode receiver does not react and LED continues to flash, this means the memory is **FULL** and no further memory can be stored unless one or more memory is deleted. (See Below).

To Unpair:

1. On the L series receiver press the **'Learn'** button once, (LED on receiver will flash), this will enter learning mode.
2. With the wireless wall switch press **'OFF'** button once to unpair, red LED will flash twice and LED on receiver will flash twice to confirm that memory is deleted successfully.

**M Series pairing method.**

M series receiver can store up to 32 memories, first in first out storage maintain.

To Pair: with socket switch

1. Plug the socket switch into an electrical outlet.
2. Within 6 seconds press **'ON'** button once on wireless wall switch to pair, green LED will flash once and load will flash twice to confirm that pairing is successful and complete.

To Unpair: with socket switch

1. Unplug socket switch from the electrical outlet for at least 6 seconds.
2. Plug socket switch back into electrical outlet.
3. Within 6 seconds press **'OFF'** button once on wireless wall switch to unpair, red LED will flash twice and load will flash twice to confirm that memory is deleted successfully.

To Pair: with module receiver

1. On the M series receiver press the '**Learn**' button once (LED on receiver will flash), this will enter learning mode.
3. With the wireless wall switch press '**ON**' button once to pair, green LED will flash once and LED on receiver will flash twice to confirm that pairing is successful and complete.

To Unpair: with module receiver

1. On the L series receiver press the '**Learn**' button once, (LED on receiver will flash), this will enter learning mode.
2. With the wireless wall switch press '**OFF**' button once to unpair, red LED will flash twice and LED on receiver will flash twice to confirm that memory is deleted successfully.

6. Operation

Colour status of LED indication.

Red represents:

Battery low – LED flash once every 4 seconds.

OFF – LED flash twice.

Green represents:

Dimming – LED will continue to flash until the button is released.

Direct Maximum & Minimum brightness level – LED flash 4 times.

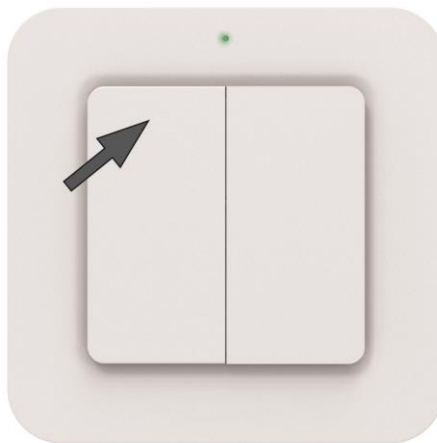
ON – LED flash once.

Delay Timer setup – LED will quick flash.

ON / OFF OPERATION

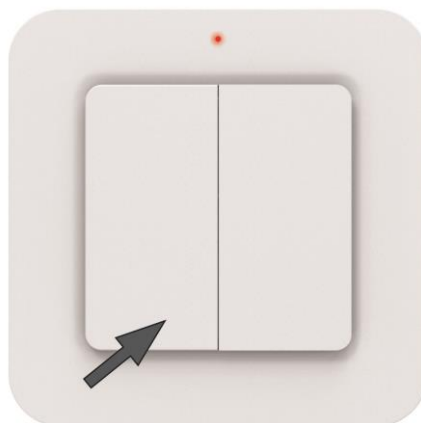
Turn the load ON:

1. Press ON button once. Green LED will flash once.



Turn the load OFF:

1. Press OFF button once. Red LED will flash twice.



DIMMING OPERATION

Direct Maximum & Minimum brightness level.

The feature of this is to allow 2 or more dimming loads to dimming smoothly at the same level.

For example if you are controlling the mixture of L and M series receivers the dimming result is different.

L series dims in cycle mode.

M series dims up to maximum brightness then stops or dims down to minimum brightness then stops.

Operation:

Direct Maximum dim – press ON button twice, green LED flash 4 times.

Direct Minimum dim – press OFF button twice, green LED flash 4 times.

L Series dimming Up & Down

※ Dimming level dims in cycle, during the cycle if no signal is given 『 with 4 cycles it will stop at 100% brightness 』 .

! After setting brightness level, the next time switching ON the load will return to the previous stipulated brightness.

There are 3 methods of dimming.

Method 1.

1. With the load ON.
2. Press the ON button once, the load will start to dim in cycle.
3. To stop at the desire brightness level press the ON button again.
4. Next time dimming the load will result opposite, for example this time the load dims up and stop, the next time dimming with be dimming down.

Method 2.

1. With the load ON.
2. Hold down either the ON or OFF button, the load will start to dim in cycle.
3. To stop at the desire brightness level release holding down the button.
4. Next time dimming the load will result opposite, for example this time the load dims up and stop, the next time dimming with be dimming down.

Method 3.

1. With the load OFF.
2. Hold down either the ON or OFF button. Load will turn ON then release holding down the button, the load will start to dim in cycle.
3. To stop at the desire brightness level press the ON button again.
4. Next time dimming the load will result opposite, for example this time the load dims up and stop, the next time dimming with be dimming down.

M Series dimming Up & Down.

※ During dimming process when the load level reaches to the minimum or maximum bright it will stop, to continue dimming release button then press button again to start dimming.

! After setting brightness level, the next time switching ON the load will return to the previous stipulated brightness.

There are 3 methods of dimming.

Method 1.

Dim Up

1. With the load OFF.
2. Hold down ON button, load will turn ON then start to dim up.
3. At the desired load level release the ON button to stop.
4. During dimming process load will stop at the maximum brightness and will not continue dimming.

Dim Down

1. With the load OFF.
2. Hold down OFF button, load will turn ON then start to dim down.
3. At the desired load level release the OFF button to stop.
4. During dimming process load will stop at the minimum brightness and will not continue dimming.

Method 2.

1. With the load ON.
2. Press the ON button once, the load will start to dim up.
3. To stop at the desire brightness level press the ON button again.
4. Next time dimming the load by pressing the ON button once, the load will start to dim down, this is the opposite result of the last time dimming.
※For example this time the load dims up and stop, the next time dimming will be dim down.
5. During dimming process load will stop at either maximum or minimum brightness and will not continue dimming.
6. To continue dimming repeat step 2-3.

Method 3.

1. With the load ON.
2. Hold down ON button, load will start to dim up.
3. Or hold down OFF button, load will start to dim down.
4. At the desired load level release the button to stop.
5. During dimming process load will stop at maximum or minimum brightness and will not continue dimming.
6. To continue dimming repeat step 2-3-4.

7. DELAY TIMER

Base on the need, you can set the connected device to turn OFF at the selected delay timer.

When device is turned ON, the delay timer will start to count down and turn OFF when the time reach to 0.

You can also de-active the delay timer by pressing the OFF button, and the next time turning ON the device the timer will start counting down from the beginning again.

6 timer function to select: 0, 5s, 1m, 10m, 30m, 60m.

LED indication:

0 – LED flash once each interval

5s – LED flash twice each interval

1m – LED flash three times each interval

10m – LED flash four times each interval

30m – LED flash five times each interval

60m – LED flash six times each interval

When controlling dimmer device(s), set the load dim level under 0 timer first to avoid abnormal outcome.

Enter delay timer setup mode:

1. Hold down ON and OFF button for 3 seconds, green LED will start to flash. (the number of flashes represents the current timer mode its in).
2. Press ON button to move up one step or
3. Press OFF button to move down one step.
4. Once the timer is selected, hold down ON and OFF button for 3 seconds, green LED will quick flash to confirm timer is set.

Delay timer setup mode will exit after 16 seconds if no action is given and will not store any timer setup.

Example setup for 1m delay timer (From 0 to 1m)

1. Hold down ON and OFF button for 3 seconds, green LED will flash once between each internal.
2. Press ON button once to move up one step (5s), green LED flash twice between each internal, press ON button again to move up to next timer (1m), green LED flash three times.
3. Hold down ON and OFF button for 3 seconds to store the 1m delay timer, LED will quick flash to confirm timer is set.

8. Specifications

Battery:	3V CR2032 Lithium Cell Battery
Radio Frequency:	433.92MHz
Power consumption:	<1W
Environment Temperature:	-10 ~ 35 °C
Range:	up to 50 m indoors (Depends on building materials)
CE Certification:	The CE marked affixed to this product confirms Its complaisance with the European Directives Which apply to the product and in particular its compliance with the harmonizes standards and specifications.



Dimension	80 x 80 x 15 mm
Weight:	60 g
Accessory pack enclosed:	2pcs double sided adhesive tape. 2pcs screws.