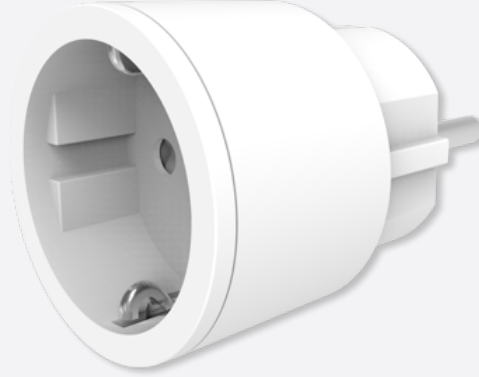


**100W UNIVERSAL  
DIMMER  
SOCKET SWITCH  
SCHUKO**

MYCR-100





# 100W UNIVERSAL DIMMER SOCKET SWITCH SCHUKO PLUG

SIMPLE BUT POWERFUL.

Transform your electronic devices to wireless control with the compact dimmer socket switch plug. All you need to do is plug the socket switch into an electrical outlet, plug a device into the socket switch, and control your device wirelessly using a remote control.

## **i** FEATURES

- Compatible to L and M series
- 100W dimmer universal load control.
- Plugs into any regular electrical wall outlet.
- Intuitive, Plug and Play.
- Control mode under Trailing Edge.
- Minimum brightness setup for different kinds of dimmer loads.
- 32 memories, first in first out storage maintain.
- Scene status memory, create your desired atmosphere.

## **⚙️** TECHNICAL DATA

- Input Rating: 230V~50Hz
- Output Rating:  
100W Max. (Resistive Load / Incandescent / halogen lamps)  
50W Max. (Dimmable LED / Dimmable energy saving lamps)
- Radio Frequency: 433.92MHz
- Power Consumption: <1W
- Environment Temperature: 0-40 °C
- Range: Up to 50 Meter range (Depends on building materials)

## **⚙️** SPECIFICATION

- Dimension (D x H): 48 ø x 50 mm
- Weight: 60g

