



MANUAL



TOUCH WALL SWITCH MTHT-1806

CONTENTS

1. Overview and features	Page 2.
2. Diagrams	Page 3.
3. Battery	Page 4.
4. Mounting on surface	Page 6.
5. Sensitive Calibration	Page 9.
6. Pairing / Un-pairing device	Page 10.
7. Operation	Page 13.
8. Scene setup / Scene control	Page 16.
9. Specifications	Page 18.

1. Overview and features

Elegant streamline design wireless touch wall switch control connected devices at the touch of a button. Set multiple lights, electronics and small appliances to turn On, Off and Dim.

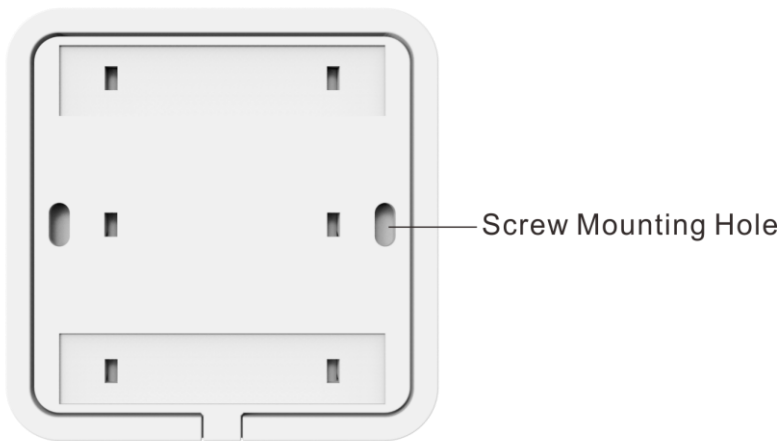
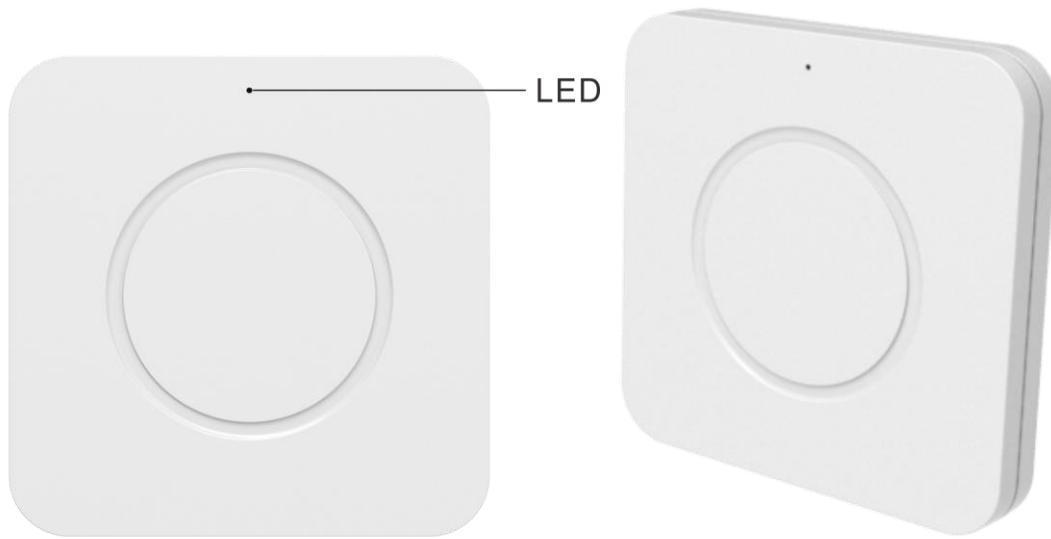
Touch wall switch is unbelievably easy to install, customize your favorite scenes to make the switch do exactly what you want.

Main features;

- Compatible to L and M series.
- Simple single and double tap action.
- Scene status memory, create your desired atmosphere.
- Equipped with 3 scene control and All Off control.
- 3V CR2032 battery operation with low battery indication.
- Red, Green and Amber LED indication representing different operation status.
- Easy mounting with screws or use adhesive tape on flat surface.

2. Diagrams.

Notes for the diagrams:



Function Switch

1. Load Control – Single control individual load device.
2. Scene Control – Activate / Deactivate already stored scene.
3. Scene Setup – Storing scene.

3. Battery

Red LED will flash once every 4 seconds to indicate the battery is low

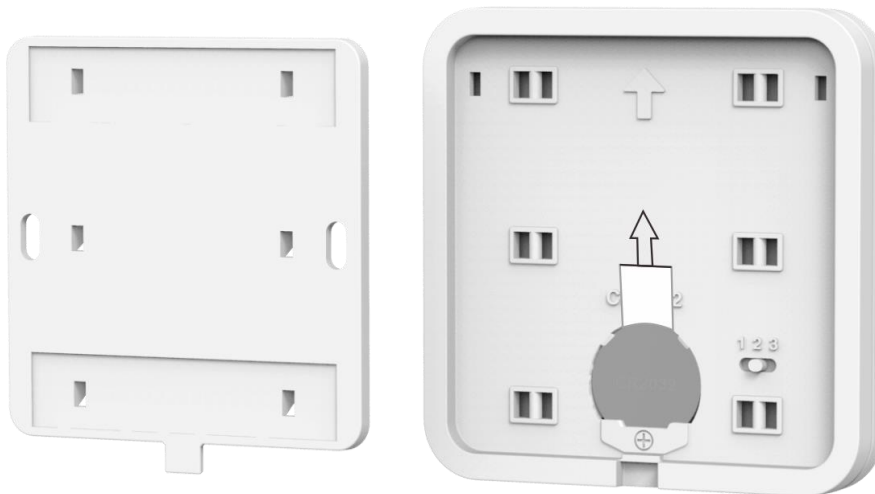
1. With a slot screwdriver gently insert into bottom slot then lift open the back cabinet.



2. Remove back cabinet.



3. Remove battery insulation strip. (First time use only)



4. Or replace with a new 3V CR2032 battery making sure the positive symbol is facing upwards.



LITHIUM BATTERY CAUTION:

Risk of Explosion if battery is replaced by an incorrect type. Dispose of used batteries according to the environment protection rules.

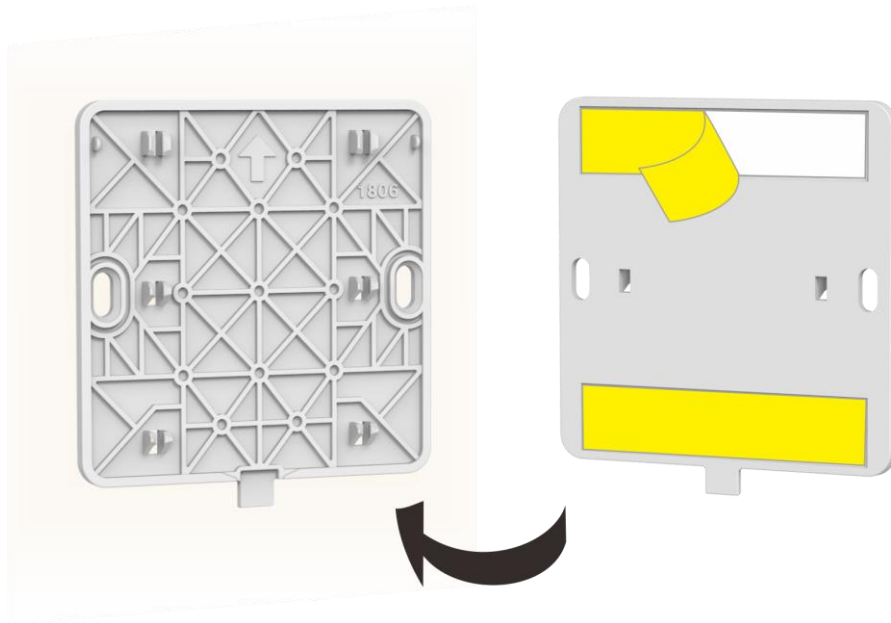
4. Mounting On Surface

Touch wall switch has 2 ways of mounting on surface.

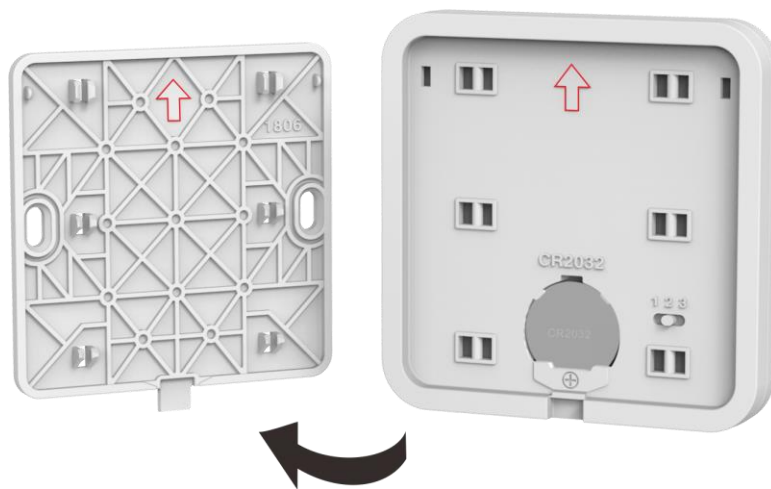
Method 1.

With 3M double sided adhesive tape enclosed in the accessory pack.

1. Correctly position the adhesive tape on the back cabinet.
2. Stick the back cabinet onto surface making sure the arrow is facing upwards.



3. Behind the touch wall switch there is also an arrow.
Make sure both arrows are facing up wards.



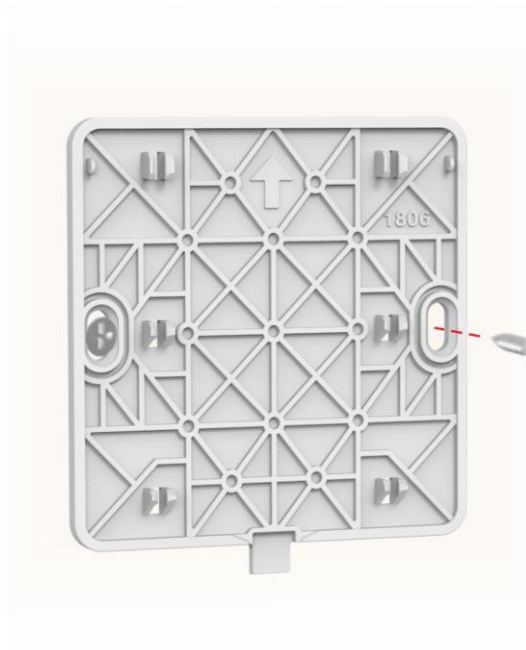
4. Align the touch wall switch onto the 6 clips and with a little force push forward making sure 'click' sound is heard.



Method 2.

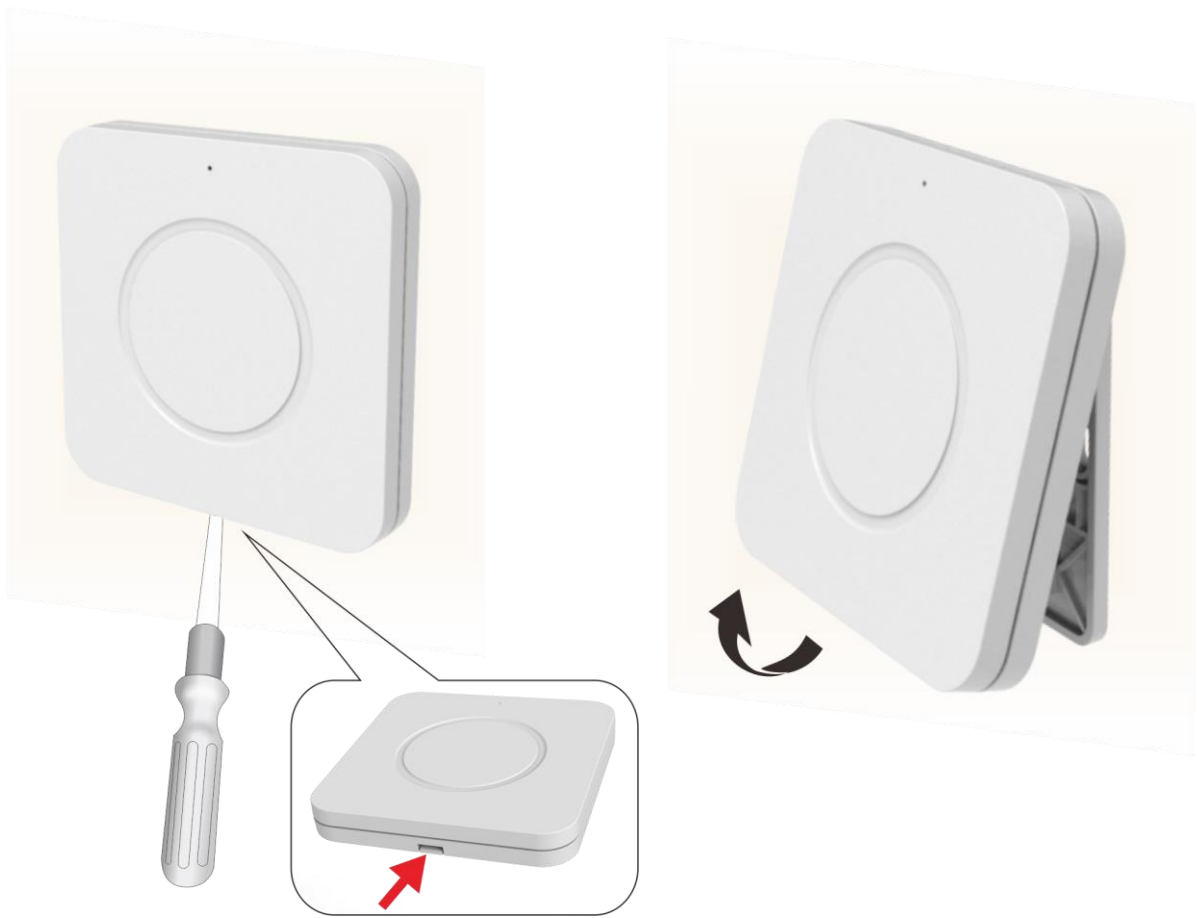
Mounting with 2 screws enclosed in the accessory pack:

1. Position back cabinet onto surface making sure the arrow is facing up then affix tightly with 2 screws.



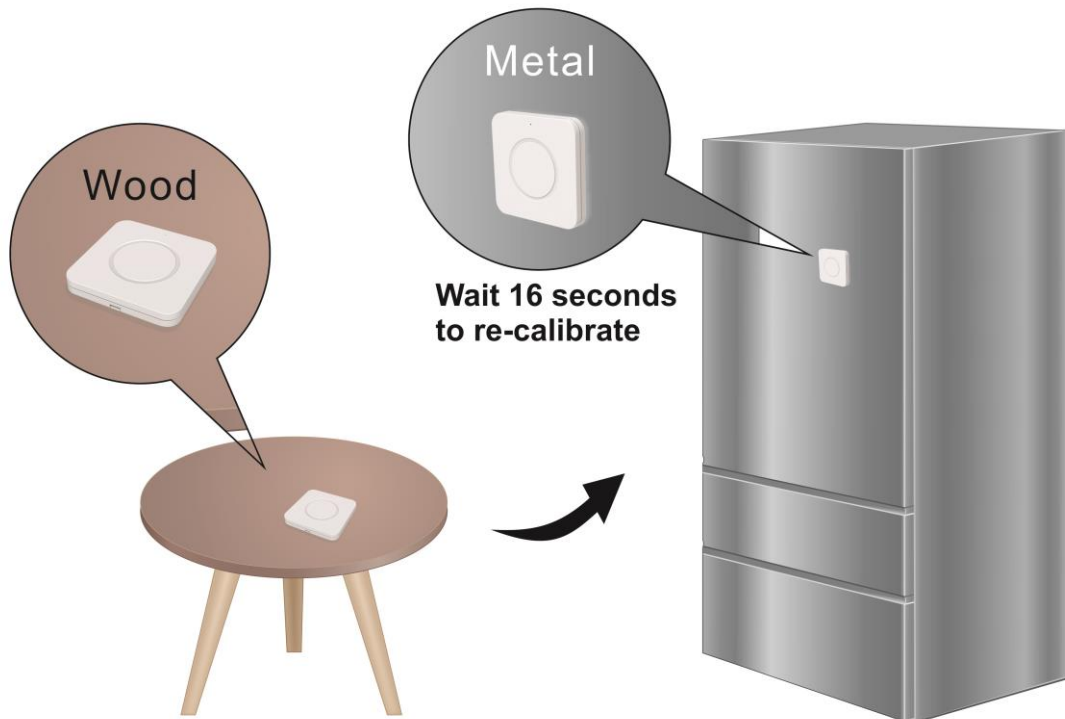
2. Align the touch wall switch onto the 6 clips and with a little force push forward making sure 'click' sound is heard.

To remove the touch wall switch, with a slot screwdriver gently insert into bottom slot then lift up the touch wall switch.



5. Sensitive Calibration.

Each time you replace a battery or move the touch wall switch to a different location / surface, the touch sensitivity tab will self-calibrate for 16 seconds. This is to make sure the touch sensitivity reacts correctly on different surface such as wood, metal or concrete etc... During the calibrate period please do not touch or move the touch wall switch until calibration is complete.



6. Pairing / Un-pairing Device

Function Switch at position 1.



L Series pairing method.

Learning mode lasts for 12 seconds; if no signal is received from remote control / wall switch between this time then the receiver will automatically exit learning mode without pairing any device.

To exit learning mode manually, simply press the **'Learn'** button again.

To Pair: (Receiver can store up to 6 memories.)

1. On the L series receiver press the **'Learn'** button once (LED on receiver will flash), this will enter learning mode.
2. With the touch wall switch tap button once to pair, green LED will flash once and LED on receiver will flash twice to confirm that pairing is successful and complete.



! If during learning mode receiver does not react and LED continues to flash, this means the memory is **FULL** and no further memory can be stored unless one or more memory is deleted. (See Below).

To Unpair:

1. On the L series receiver press the '**Learn**' button once, (LED on receiver will flash), this will enter learning mode.
2. With the touch wall switch tap button twice to unpair, red LED will flash twice and LED on receiver will flash twice to confirm that memory is deleted successfully.



M Series pairing method.

M series receiver can store up to 32 memories, first in first out storage maintain.

To Pair: with socket switch

1. Plug the socket switch into an electrical outlet.
2. Within 6 seconds tap button once on touch wall switch to pair, green LED will flash once and load will flash twice to confirm that pairing is successful and complete.

To Unpair: with socket switch

1. Unplug socket switch from the electrical outlet for at least 6 seconds.
2. Plug socket switch back into electrical outlet.
3. Within 6 seconds tap button twice on touch wall switch to unpair, red LED will flash twice and load will flash twice to confirm that memory is deleted successfully.

To Pair: with module receiver

1. On the M series receiver press the '**Learn**' button once (LED on receiver will flash), this will enter learning mode.
2. With the touch wall switch tap button once to pair, green LED will flash once and LED on receiver will flash twice to confirm that pairing is successful and complete.

To Unpair: with module receiver

1. On the M series receiver press the '**Learn**' button once, (LED on receiver will flash), this will enter learning mode.
2. With the touch wall switch tap button twice to unpair, red LED will flash twice and LED on receiver will flash twice to confirm that memory is deleted successfully.

7. Operation

Colour status of LED indication.

Red represents:

Battery low – LED flash once every 4 seconds.

OFF – LED flash twice.

Green represents:

Dimming – LED will continue to flash until the button is released.

ON – LED flash once.

Amber represents:

Scene – Activate or Deactivate or setup of scene.

※ Please allow 0.3 seconds gap in between each tap.

SINGLE ON / OFF OPERATION

Function Switch at position 1.

Turn the load ON:

1. Tap button once. Green LED will flash once.



Turn the load OFF:

1. Tap button twice. Red LED will flash twice.



DIMMING OPERATION

Function Switch at position 1.

L Series dimming Up & Down

※ Dimming level dims in cycle, during the cycle if no signal is given 『 with 4 cycles it will stop at 100% brightness 』 .

! After setting brightness level, the next time switching ON the load will return to the previous stipulated brightness.

There are 3 methods of dimming.

Method 1.

1. With the load ON.
2. Tap button once, load will start to dim in cycle.
3. To stop at the desire brightness level tap button again.
4. Next time dimming the load will result opposite, for example this time the load dims up and stop, the next time dimming with be dimming down.

Method 2.

1. With the load ON.
2. Tap and hold button, load will start to dim in cycle.
3. To stop at the desire brightness level release holding the button.
4. Next time dimming the load will result opposite, for example this time the load dims up and stop, the next time dimming with be dimming down.

Method 3.

1. With the load OFF.
2. Tap and hold button, load will turn ON then release holding button, the load will start to dim in cycle.
3. To stop at the desire brightness level tap button again.
4. Next time dimming the load will result opposite, for example this time the load dims up and stop, the next time dimming with be dimming down.

M Series dimming Up & Down.

! After setting brightness level, the next time switching ON the load will return to the previous stipulated brightness.

There are 2 methods of dimming.

Method 1.

1. With the load ON.
2. Tap button once, load will start to dim.
3. To stop at the desire brightness level tap button again.
4. Next time dimming the load by tapping the button once, the load will start to dim at the opposite result of the last time dimming.
※For example this time the load dims up and stop, the next time dimming will be dim down.
5. During dimming process load will stop at either maximum or minimum brightness and will not continue dimming.
6. To continue dimming repeat step 2-3.

Method 2.

1. With the load ON.
2. Tap and hold button, load will start to dim.
3. At the desired load level release the button to stop.
4. During dimming process load will stop at maximum or minimum brightness and will not continue dimming.
5. To continue dimming repeat step 2-3.

7. Scene Setup / Scene Control

SCENE SETUP

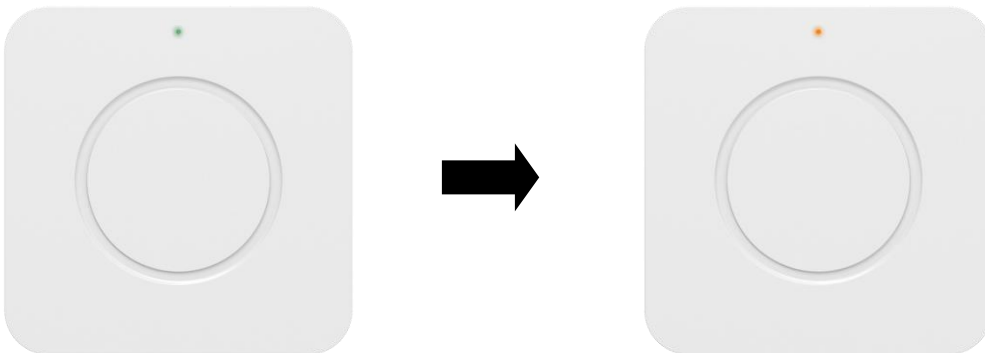
Touch wall switch has built in 3 scene control which sends a unique command to M series receiver to recall already stored scene memory stored in the receivers. In another word, scene setup memory is stored in the M series receiver side so each time a command is received from and M series transmitter, the M series receiver will know to activate whichever scene (1 / 2 / 3) to be called.

Because the memory is stored in the M series receiver so as long the M series transmitter has been paired with the M series receiver the scene command will also work.

No need to reprogram each individual scene if you have 1 or more M series transmitter.

Single device setup:

1. Function Switch at position 1.
2. Set the desired load level.
3. Slide function switch to position 3.
4. Store scene into touch wall switch.
 - Tap button once to store Scene 1 → Green LED flash 3 times → Amber LED flash 1 time to confirm Scene 1 is stored.
 - Tap button twice to store Scene 2 → Green LED flash 3 times → Amber LED flash 2 times to confirm Scene 2 is stored.
 - Tap button 3 times to store Scene 3 → Green LED flash 3 times → Amber LED flash 3 times to confirm Scene 3 is stored.



Multiple receiver device setup with another transmitter: (compatible to M series receiver only)

If you intend to set up multiple receiver device at the same time then you will need to use a 2nd transmitter such as LYCT-505 or MYCT-1702 to set the load level.

Firstly, make sure the 2nd transmitter is also paired to each individual receiver device same as to the touch wall switch is paired to.

1. With the 2nd transmitter, set the desired load level.
2. On the touch wall switch in switch to position 3.
3. Store scene into touch wall switch.
 - Tap button once to store Scene 1 → Green LED flash 3 times → Amber LED flash 1 time to confirm Scene 1 is stored.
 - Tap button twice to store Scene 2 → Green LED flash 3 times → Amber LED flash 2 times to confirm Scene 2 is stored.
 - Tap button 3 times to store Scene 3 → Green LED flash 3 times → Amber LED flash 3 times to confirm Scene 3 is stored.

SCENE CONTROL

Function switch at position 2.

Activate Scene.

Scene 1.

- Tap button once → Amber LED flash 1 time.

Scene 2.

- Tap button twice → Amber LED flash 2 times.

Scene 3.

- Tap button 3 times → Amber LED flash 3 times.

Deactivate Scene.

- Tap and hold button for 2 seconds → Red LED flash 2 times.

8. Specifications

Battery:	3V CR2032 Lithium Cell Battery
Radio Frequency:	433.92MHz
Power consumption:	<1W
Environment Temperature:	-10 ~ 35 °C (Indoor use)
Range:	up to 50 m indoors (Depends on building materials)
In accordance with:	Low Voltage Directive 2014/35/EU RED Directive 2014/53/EU
CE Certification:	The CE marked affixed to this product confirms its compliance with the European Directives which apply to the product and in particular its compliance with the harmonized standards and specifications.



Dimension	80 x 80 x 11 mm
Weight:	60 g
Accessory pack enclosed:	2pcs double sided adhesive tape. 2pcs screws.