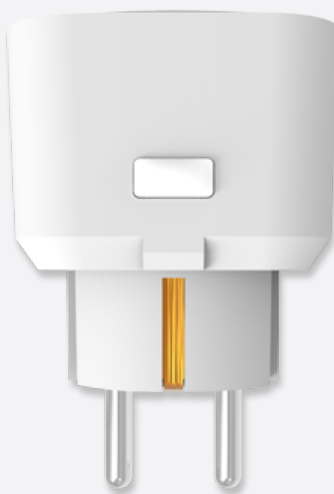
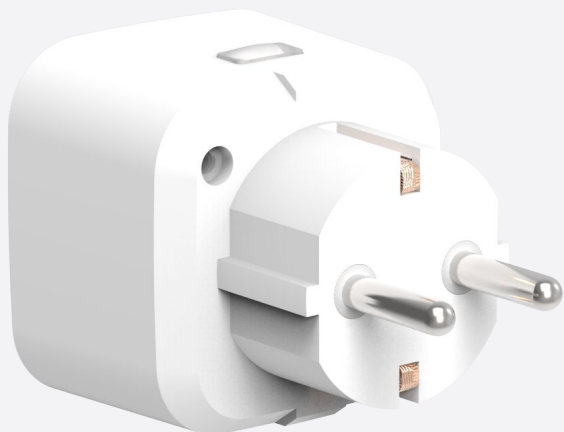


# UNIVERSAL DIMMER SOCKET SWITCH SCHUKO

MYCR-250





# UNIVERSAL DIMMER SOCKET SWITCH SCHUKO PLUG

SIMPLE BUT POWERFUL.

Transform your electronic devices to wireless control with the compact socket switch plug.

All you need to do is plug the socket switch into an electrical outlet, plug a device into the socket switch, and control your device wirelessly using a remote control.

## FEATURES

- Compatible to L and M series
- 250W dimmer universal load control
- Plugs into any regular electrical wall outlet.
- Built-in manual On & Off button with LED indication.
- Control mode of Trailing Edge or Leading Edge.
- Minimum brightness setup for different kinds of dimmer loads.
- 32 memories, first in first out storage maintain.
- Scene status memory, create your desired atmosphere.

## TECHNICAL DATA

- Input Rating: 230V~50Hz
- Output Rating:

Supported Load	Wattage
"Trailing edge" for resistive loads (R)	20-250W / 230V~
• Conventional incandescent and halogen light source	
"Trailing edge" for resistive-capacitive loads (RC)	20-250W / 12V~ 3-120W / 230V~
• Electronic transformers • Dimmable LED and energy saving lamps.	
"Leading edge" for resistive-inductive loads (RL)	40-250W / 12V~
• Inductive transformers	

- Range: Up to 50 Meter range (Depends on building materials).
- Radio Frequency: 433.92MHz
- Power Consumption: <1W
- Environment Temperature: 0-40 °C

## SPECIFICATION

- Dimension (W x H x D): 53 x 53 x 59 mm
- Weight: 60g