



# MANUAL



## ROTARY DIMMER WALL SWITCH MRYT-1805

### CONTENTS

---

1. Overview and features	Page 2.
2. Diagrams	Page 3.
3. Battery	Page 4.
4. Mounting on surface	Page 6.
5. Pairing / Un-pairing device	Page 9.
6. Operation	Page 12.
7. Specifications	Page 17.

# 1. Overview and features

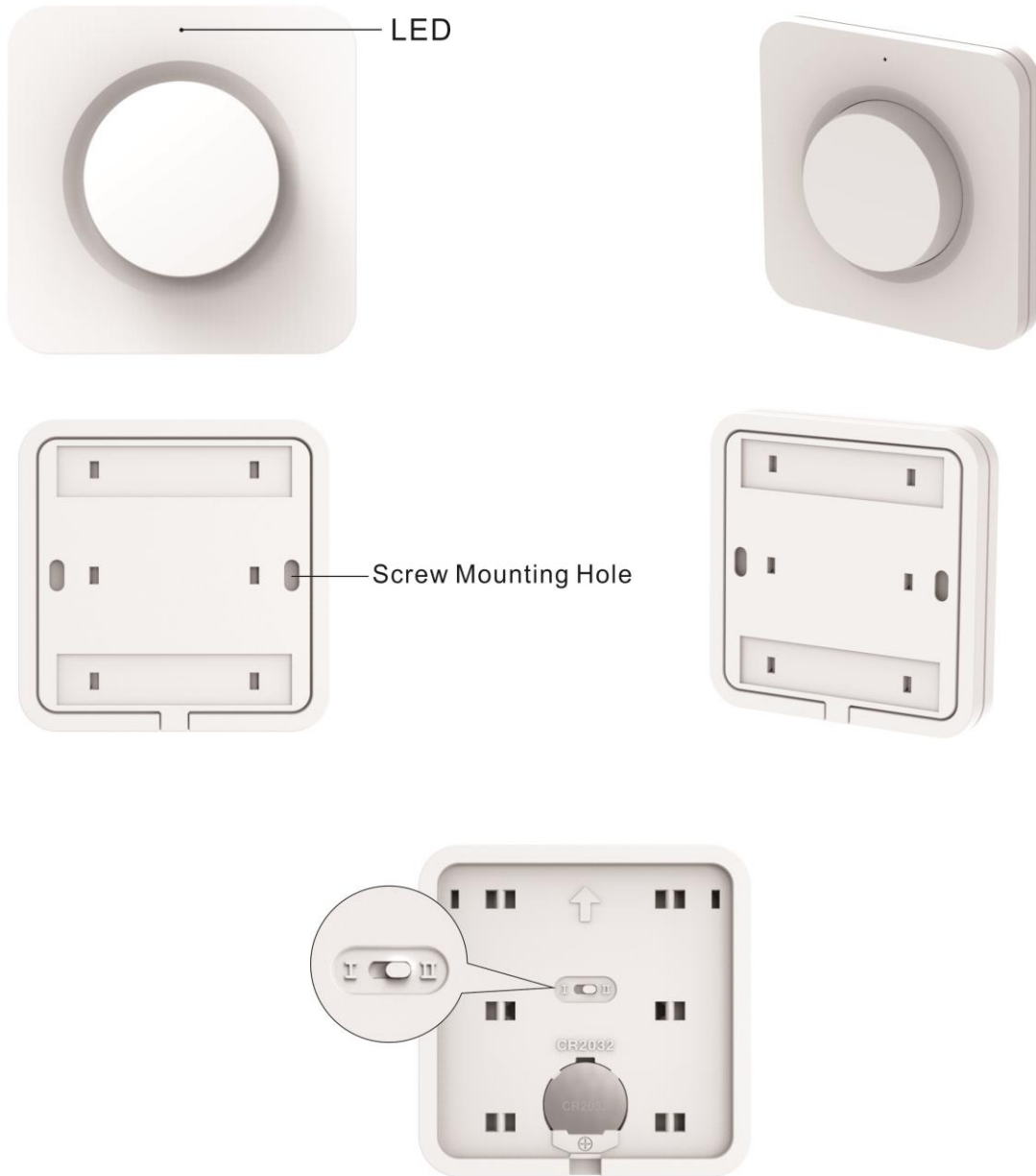
Ultra slim design wireless rotary dimmer wall switch that plays a key role in enhancing the convince, comfort and energy efficiency of smart homes. In addition to rotary function, single button is also built in for the eze of On/Off control.

## **Main features;**

- Compatible to L and M series.
- Smooth dimming or step dimming.
- Simple single and double click action
- 3V CR2032 battery operation with low battery indication.
- Red and Green LED indication representing different operation status.
- Easy mounting with screws or use adhesive tape on flat surface.

## 2. Diagrams.

Notes for the diagrams:



Switch Position.

- I Operating in conjunction with L & M series receiver.  
L & M series receiver will dim up & down in steps.
- II Operating M series receiver only.  
M series receiver will smooth dim up & down.  
Dimming of L series receiver(s) is not compatible under II position as the rotary function may cause dimming to react abnormally.

### 3. Battery

Red LED will flash once every 4 seconds to indicate the battery is low.

1. With a slot screwdriver gently insert into bottom slot then lift open the back cabinet.



2. Remove back cabinet.



3. Remove battery insulation strip. (First time use only)



4. Or replace with a new 3V CR2032 battery making sure the positive symbol is facing upwards.



**LITHIUM BATTERY CAUTION:**

Risk of Explosion if battery is replaced by an incorrect type. Dispose of used batteries according to the environment protection rules.

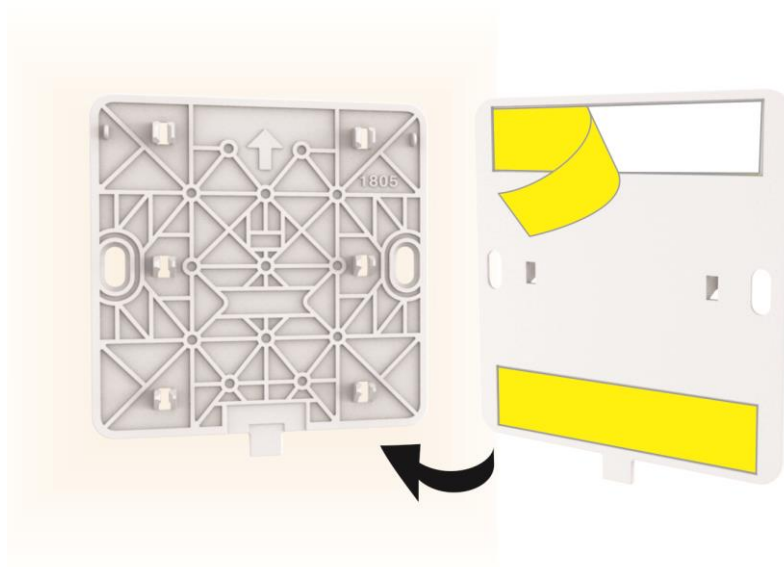
## 4. Mounting On Surface

Wireless rotary dimmer wall switch has 2 ways of mounting on surface.

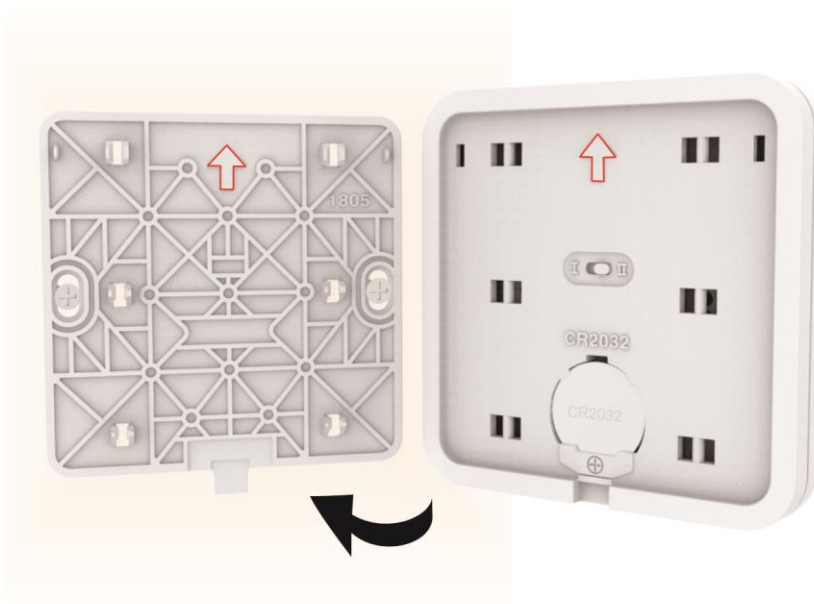
### Method 1.

With 3M double sided adhesive tape enclosed in the accessory pack.

1. Correctly position the adhesive tape on the back cabinet.
2. Stick the back cabinet onto surface making sure the arrow is facing upwards.



3. Behind the rotary switch there is also an arrow.  
Make sure both arrows are facing up wards.



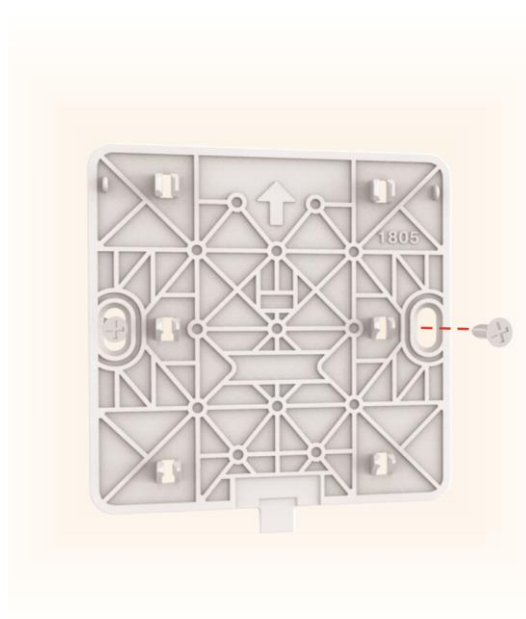
4. Align the rotary switch onto the 6 clips and with a little force push forward making sure 'click' sound is heard.



#### Method 2.

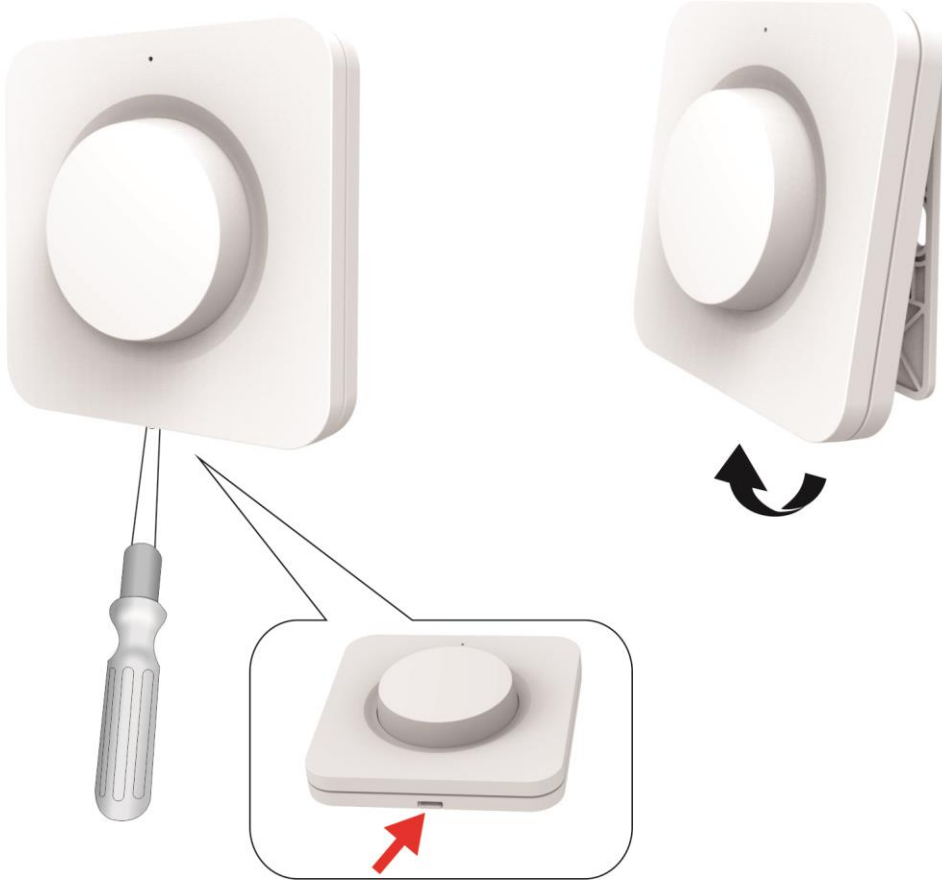
Mounting with 2 screws enclosed in the accessory pack:

1. Position back cabinet onto surface making sure the arrow is facing up then affix tightly with 2 screws.



2. Align the rotary switch onto the 6 clips and with a little force push forward making sure 'click' sound is heard.

To remove the rotary switch, with a slot screwdriver gently insert into bottom slot then lift up the rotary.





## 5. Pairing / Un-pairing Device

### L Series pairing method.

Learning mode lasts for 12 seconds; if no signal is received from remote control / wall switch between this time then the receiver will automatically exit learning mode without pairing any device.

To exit learning mode manually, simply press the '**Learn**' button again.

To Pair: (Receiver can store up to 6 memories.)

1. On the L series receiver press the '**Learn**' button once (LED on receiver will flash), this will enter learning mode.
2. With the rotary switch press button once to pair, green LED will flash once and LED on receiver will flash twice to confirm that pairing is successful and complete.



! If during learning mode receiver does not react and LED continues to flash, this means the memory is **FULL** and no further memory can be stored unless one or more memory is deleted. (See Below).

**To Unpair:**

1. On the L series receiver press the '**Learn**' button once, (LED on receiver will flash), this will enter learning mode.
2. With the rotary switch press button twice to unpair, red LED will flash twice and LED on receiver will flash twice to confirm that memory is deleted successfully.

**M Series pairing method.**

M series receiver can store up to 32 memories, first in first out storage maintain.

**To Pair: with socket switch**

1. Plug the socket switch into an electrical outlet.
2. Within 6 seconds press button once on rotary switch to pair, green LED will flash once and load will flash twice to confirm that pairing is successful and complete.

**To Unpair: with socket switch**

1. Unplug socket switch from the electrical outlet for at least 6 seconds.
2. Plug socket switch back into electrical outlet.
3. Within 6 seconds press button twice on rotary switch to unpair, red LED will flash twice and load will flash twice to confirm that memory is deleted successfully.

**To Pair: with module receiver**

1. On the M series receiver press the '**Learn**' button once (LED on receiver will flash), this will enter learning mode.
3. With the rotary switch press button once to pair, green LED will flash once and LED on receiver will flash twice to confirm that pairing is successful and complete.

**To Unpair: with module receiver**

1. On the L series receiver press the '**Learn**' button once, (LED on receiver will flash), this will enter learning mode.
2. With the rotary switch press button twice to unpair, red LED will flash twice and LED on receiver will flash twice to confirm that memory is deleted successfully.

## 6. Operation

Colour status of LED indication.

Red represents:

Battery low – LED flash once every 4 seconds.

OFF – LED flash twice.

Green represents:

Dimming – LED will continue to flash until the button is released or turning the rotary button.

ON – LED flash once.

### ON / OFF OPERATION

Turn the load ON:

1. Press rotary button once. Green LED will flash once.



Turn the load OFF:

1. Press rotary button twice. Red LED will flash twice.



## DIMMING OPERATION

### **Switch Position I**

**When operating in conjunction with L & M series receiver, please only use dimming method 1. In use of dimming method 2,3,4 or in conjunction may cause dimming to react abnormally.**

### L Series dimming Up & Down

※ Dimming level dims in cycle, during the cycle if no signal is given 『with 4 cycles it will stop at 100% brightness』 .

! After setting brightness level, the next time switching ON the load will return to the previous stipulated brightness.

There are 4 methods of dimming, however we recommend using dimming method 1.

Method 1.

### **Step Dim Up.**



1. With the load ON or OFF.
2. Turn rotary button clockwise to dim up.
3. During dimming process load will stop at the maximum brightness and will not continue dimming.

### Step Dim Down.



1. With the load ON or OFF.
2. Turn rotary button counterclockwise to dim down.
3. During dimming process load will stop at the minimum brightness and will not continue dimming.

#### Method 2.

1. With the load ON.
2. Press the rotary button once, the load will start to dim in cycle.
3. To stop at the desire brightness level press the rotary button again.
4. Next time dimming the load will result opposite, for example this time the load dims up and stop, the next time dimming with be dimming down.

#### Method 3.

1. With the load ON.
2. Hold down rotary button, the load will start to dim in cycle.
3. To stop at the desire brightness level release holding down the button.
4. Next time dimming the load will result opposite, for example this time the load dims up and stop, the next time dimming with be dimming down.

#### Method 4.

1. With the load OFF.
2. Hold down rotary button. Load will turn ON then release holding down the button, the load will start to dim in cycle.
3. To stop at the desire brightness level press the rotary button again.
4. Next time dimming the load will result opposite, for example this time the load dims up and stop, the next time dimming with be dimming down.

## Switch Position II

### Operation of M series receiver only.

#### M Series dimming Up & Down.

! After setting brightness level, the next time switching ON the load will return to the previous stipulated brightness.

There are 3 methods of dimming.

Method 1.

#### **Smooth Dim Up.**



1. With the load ON or OFF.
2. Turn rotary button clockwise to dim up.
3. During dimming process load will stop at the maximum brightness and will not continue dimming.

#### **Smooth Dim Down.**



1. With the load ON or OFF.
2. Turn rotary button counterclockwise to dim down.
3. During dimming process load will stop at the minimum brightness and will not continue dimming.

#### Method 2.

1. With the load ON.
2. Press the rotary button once, the load will start to dim.
3. To stop at the desire brightness level press the rotary button again.
4. Next time dimming the load by pressing the rotary button once, the load will start to dim at the opposite of the last time dimming.  
※For example this time the load dims up and stop, the next time dimming will be dim down.
5. During dimming process load will stop at either maximum or minimum brightness and will not continue dimming.
6. To continue dimming repeat step 2-3.

#### Method 3.

1. With the load ON.
2. Hold down rotary button, load will start to dim.
3. At the desired load level release the button to stop.
4. During dimming process load will stop at maximum or minimum brightness and will not continue dimming.
5. To continue dimming repeat step 2-3.



## 7. Specifications

Battery:	3V CR2032 Lithium Cell Battery
Radio Frequency:	433.92MHz
Power consumption:	<1W
Environment Temperature:	-10 ~ 35 °C (Indoor Use)
Range:	up to 50 m indoors (Depends on building materials)
In accordance with:	Low Voltage Directive 2014/35/EU RED Directive 2014/53/EU
CE Certification:	The CE marked affixed to this product confirms its compliance with the European Directives which apply to the product and in particular its compliance with the harmonized standards and specifications.



Dimension	80 x 80 x 19 mm
Weight:	60 g
Accessory pack enclosed:	2pcs double sided adhesive tape. 2pcs screws.