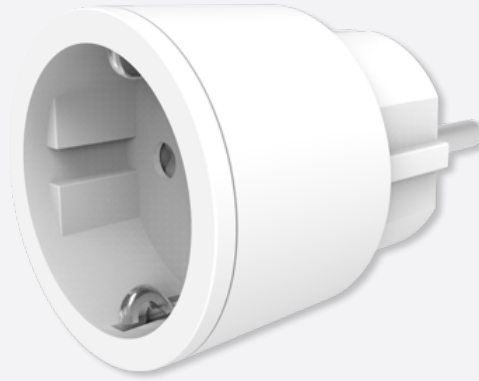


**2300W SOCKET  
SWITCH  
SCHUKO**

MYCR-2300





# 2300W SOCKET SWITCH SCHUKO PLUG

SIMPLE BUT POWERFUL.

Transform your electronic devices to wireless control with the compact socket switch plug.

All you need to do is plug the socket switch into an electrical outlet, plug a device into the socket switch, and control your device wirelessly using a remote control.

## FEATURES

- Compatible to L and M series
- 2300W resistive load control.
- Plugs into any regular electrical wall outlet.
- Intuitive, Plug and Play.
- 32 memories, first in first out storage maintain.
- Scene status memory, create your desired atmosphere.

## TECHNICAL DATA

- Input Rating: 230V~50Hz
- Output Rating: 2300W Resistive Load.
- Radio Frequency: 433.92MHz
- Power Consumption: <1W
- Environment Temperature: 0-40 °C
- Range: Up to 50 Meter range (Depends on building materials)

## SPECIFICATION

- Dimension (D x H): 48 ø x 50 mm
- Weight: 60g

