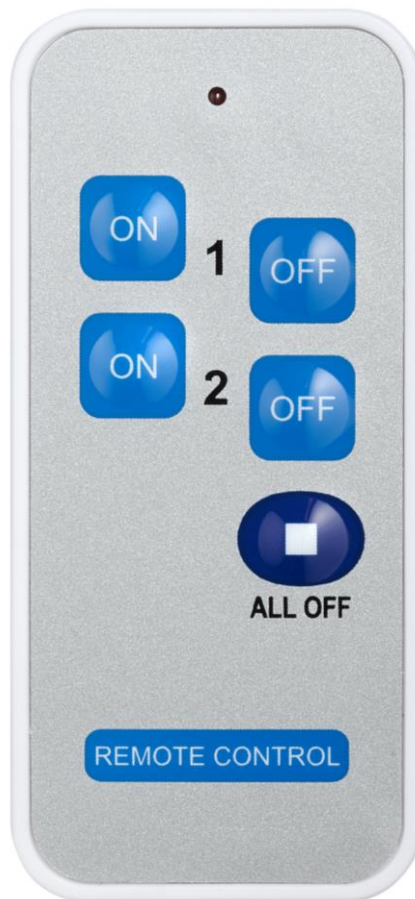


# Wireless Remote Control

LYCT-820



## Specification:

Function: 2 Channels handy remote control  
Frequency: 433.92MHz  
Battery: 3V CR2032 Lithium Cell Battery

## Overview:

Compact in size 5 buttons remote control.  
2 sets of ON/OFF button and a 'All Off' button.

## **Pairing:**

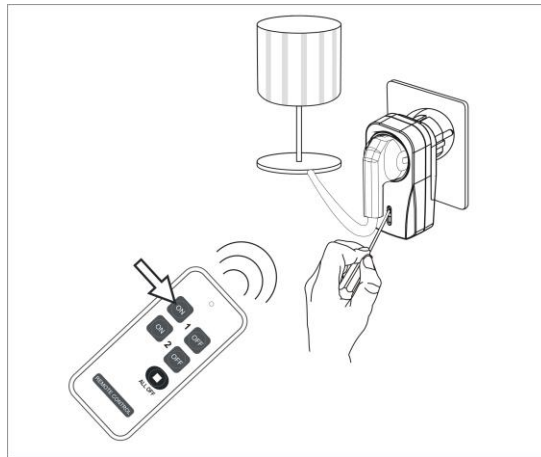
Pairing using **LEARNING MODE:**

1. First choose the desired receiver(s) that you wish to control.
2. Press the ‘**Learn**’ button once (LED will flash), this will now enter learning mode.
3. On the remote control press the ‘**ON**’ button intended to be paired; the load will flash twice to confirm that the remote control is now paired.

**NOTE:** Learning mode lasts for 12 seconds; if no signal is given to the receiver then it will automatically exit learning mode without pairing the device.

To exit learning mode manually, simply press the ‘**Learn**’ button again.

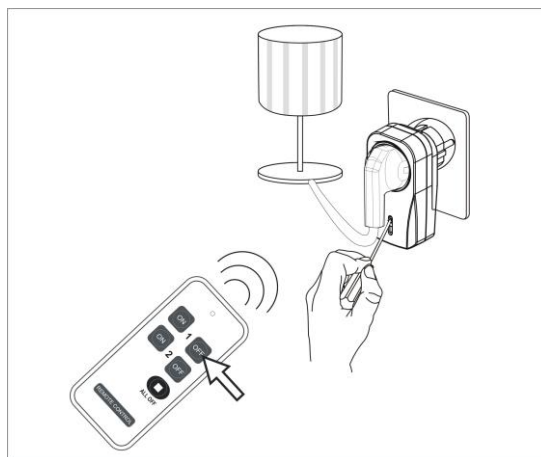
! If, during learning mode the load does not flash to confirm, this means that the receiver’s memory is **FULL** and no further remote control may be paired unless one of the existing remote control is first unpaired (see below).



## **Unpairing:**

Removing single device:

1. With the receiver that you intent to un-pair press the ‘**Learn**’ button once (LED will flash), this will now enter learning mode.
2. On the remote control press the ‘**OFF**’ button intended to be unpaired; the load will flash twice to confirm that the remote control is now unpaired.



## **Operation:**

ON/OFF Function:

Press the 'ON' button on remote control, the lights will gradually illuminate.

Press the 'OFF' button on remote control, the light will gradually turn OFF.

All off Function:

Press the 'All off' button on remote control, all lights will gradually turn off.

Dimming Function:

1. Make sure the load is switched ON.
2. On the remote control press the ON button again, the loads will start to dim.
3. To stop at the desired brightness level, press the ON button again.

※ Dimming level dims in cycle, during the cycle if no signal is given, after 4 cycles it will stop at 100% brightness.

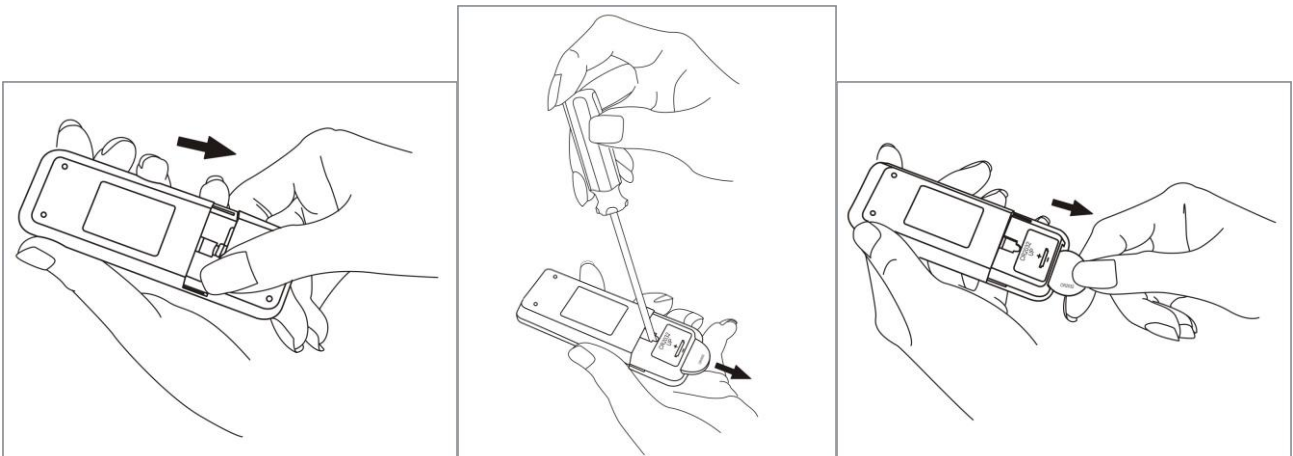
! After setting a dim level using the remote control the light is then switched OFF, the next time that the light is switched back ON again the load will return to the previous stipulated brightness.

## **Battery Replacement:**

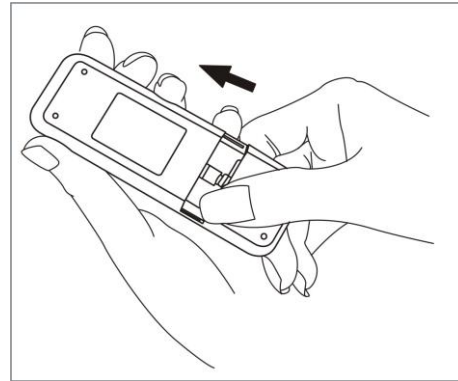
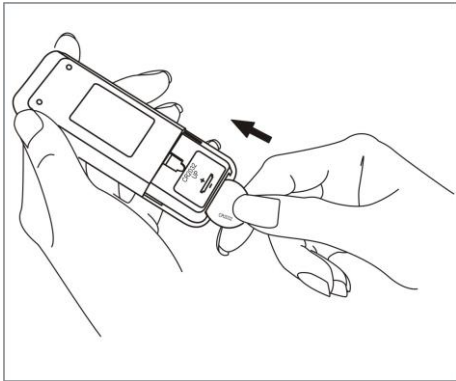
3V CR2032 lithium battery is included.

When the battery voltage is low, the transmission range will be reduced accordingly.

Slide down battery cover and with a screw driver push out the battery.



Replace with a new battery then slide up the battery cover.



### **Troubleshoot:**

**Problem:** The LED on remote control does not light up.

**Solution:** Please check if the battery is inserted correctly or replace a new battery.

**Problem:** I cannot pair my remote control with the receiver.

**Solution:** The memory on receiver is full, please delete one or more memory and try pairing again.