



MANUAL



1 GANG DELAY TIMER WALL SWITCH WST-916

CONTENTS

1. Overview & features	Page 2.
2. Diagrams	Page 3.
3. Battery	Page 4.
4. Mounting on surface	Page 6.
5. Pairing / Un-pairing device	Page 8.
6. Operation	Page 9.
7. Delay Timer	Page 10.
8. Specifications	Page 11.

1. Overview & Features

1 gang wireless delay timer wall switch that plays a key role in enhancing the convince, comfort and energy efficiency of smart homes.

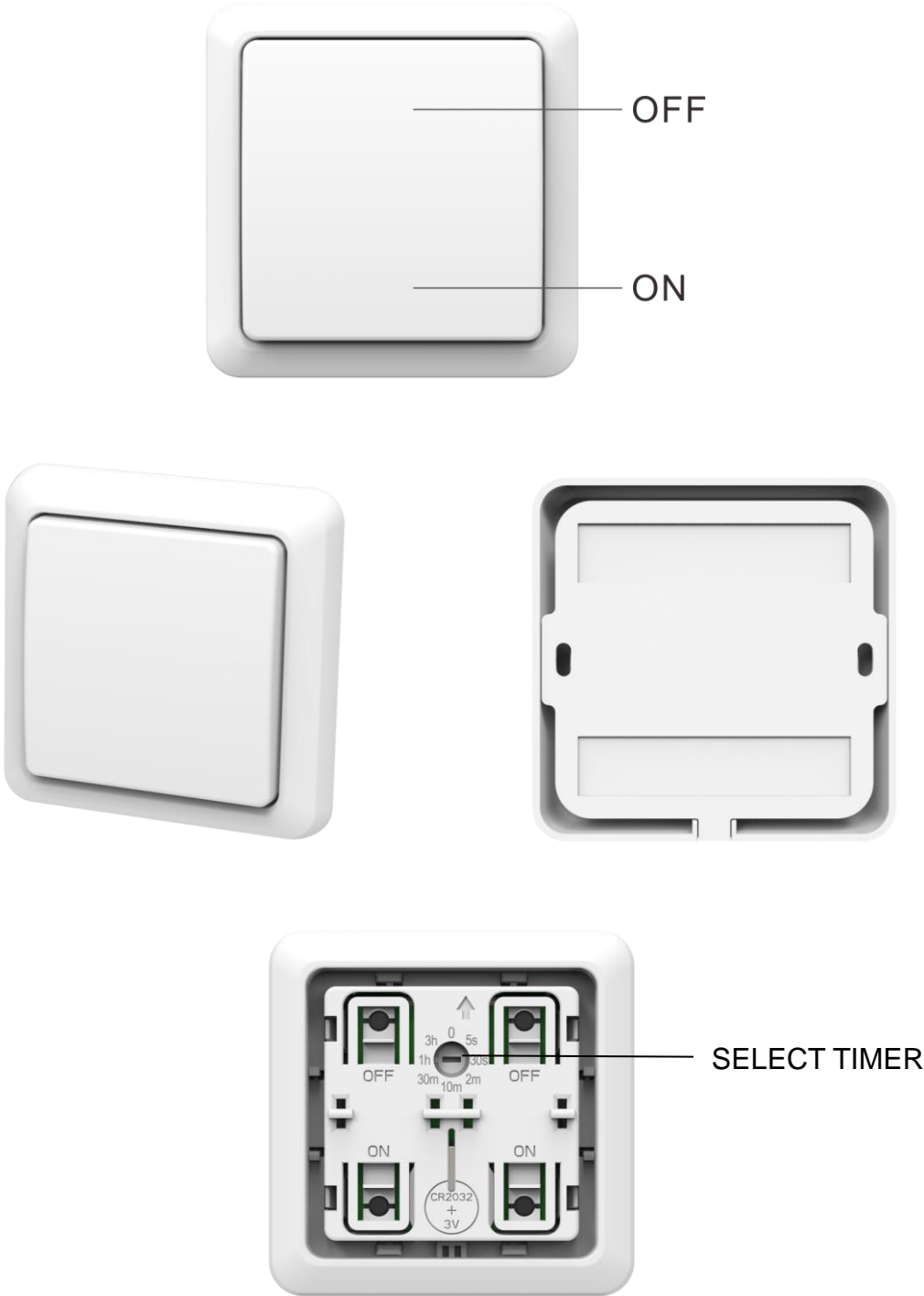
Easy dimming methods to take control of the load level.

Main features;

- 8 Delay timer function – 0, 5s, 30s, 2m, 10m, 30m, 1hr, 3hrs.
- 3V CR2032 battery operation.
- Easy mounting with screws or use adhesive tape on flat surface.

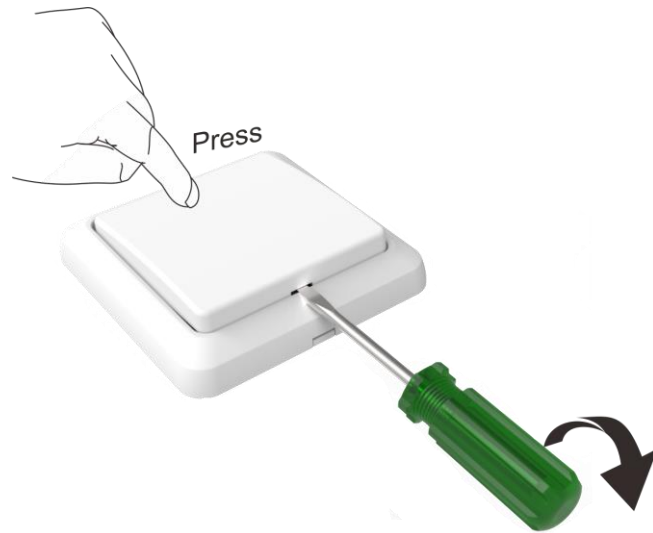
2. Diagrams

Notes for the diagrams:



3. Battery

1. Press the rocker button and with a $\Phi 3\text{mm}$ flat headed screwdriver, insert into the allocated slot in between the rocker and frame then lift screwdriver.



2. Remove rocker button.



3. Insert $\Phi 3\text{mm}$ flat headed screwdriver into allocated slot to remove rocker frame.



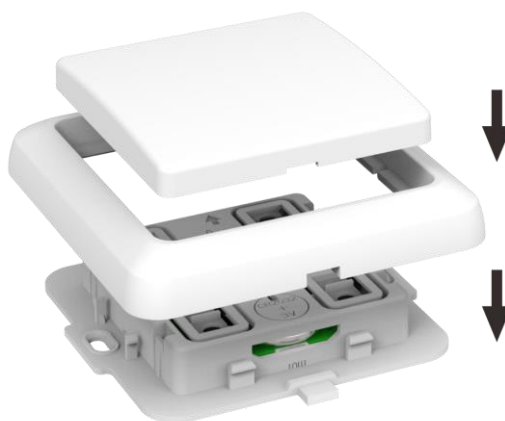
4. Insert flat headed screwdriver into slot shown below and push out the battery.



5. Replace new 3V CR2032 battery making sure the positive symbol is facing upwards.



6. Install the rocker frame and rocker to complete the battery replacement.



LITHIUM BATTERY CAUTION:

Risk of Explosion if battery is replaced by an incorrect type. Dispose of used batteries according to the environment protection rules.

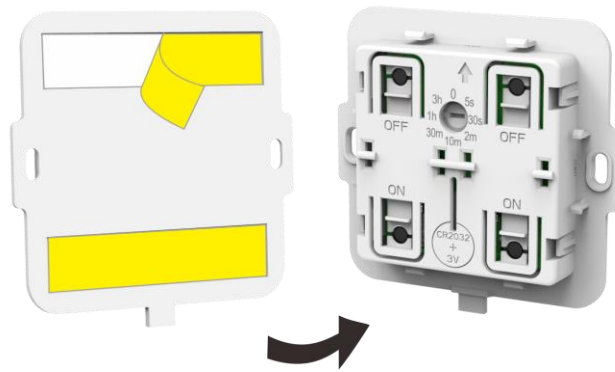
4. Mounting On Surface

Wall switch has 2 ways of mounting on surface.

Method 1.

With 3M double sided adhesive tape enclosed in the accessory pack.

1. Correctly position the adhesive tape on the back cabinet.
2. Stick the main body part onto surface making sure the arrow is facing upwards.



3. Install rocker frame onto main body part.



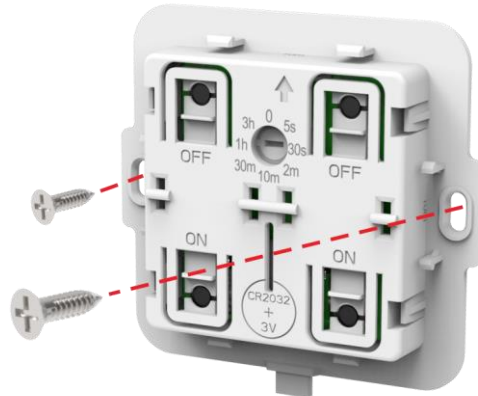
4. Align the rocker button onto the 2 clips and with a little force push forward making sure 'click' sound is heard.



Method 2.

Mounting with 2 screws enclosed in the accessory pack:

1. Position main body part onto surface making sure the arrow is facing up then affix tightly with 2 screws.



2. Install rocker frame onto main body part.



3. Align the rocker button onto the 2 clips and with a little force push forward making sure 'click' sound is heard.



5. Pairing / Un-pairing Device

PAIRING

1. First choose the desired receiver(s) that you wish to control.
2. On the receiver press the '**Learn**' button once (LED will flash), this will now enter learning mode.
3. Press the '**On**' button; the load will flash twice to confirm that the wall switch is now paired.

If, during learning mode the load does not flash to confirm, this means the receiver's memory is FULL and no further wall switch can be paired unless one of the existing wall switches are unpaired (see below).

UN-PAIRING

1. With the receiver that you intent to un-pair press the '**Learn**' button once (LED will flash), this will now enter learning mode.
2. Press the '**Off**' button; the load will flash twice to confirm that the wall switch is now un-paired.

NOTE: Learning mode lasts for 12 seconds; if no signal is given to the receiver then it will automatically exit learning mode without pairing the device. To exit learning mode manually, simply press the 'Learn' button again.

6. Operation

ON / OFF OPERATION

Turn the load ON: (Delay Timer at position '0')

Press ON button once.

Turn the load OFF: (Delay Timer at position '0')

Press OFF button once.

DIMMING OPERATION

※ Dimming level dims in cycle, during the cycle if no signal is given 『 with 4 cycles it will stop at 100% brightness 』 .

! After setting brightness level, the next time switching ON the load will return to the previous stipulated brightness.

1. With the load ON.
2. Press the ON button once, the load will start to dim in cycle.
3. To stop at the desire brightness level, press the ON button again.
4. Next time dimming the load will result opposite, for example this time the load dims up and stop, the next time dimming with be dimming down.

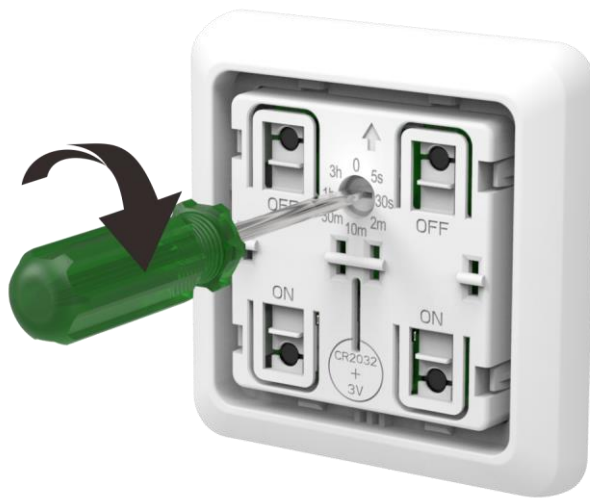
7. Delay Timer

Base on the need, you can set the connected device to turn OFF at the selected delay time.

SET TIMER

With a $\Phi 3\text{mm}$ flat headed screwdriver, adjust the dialer to the desirer delay off time.

8 timer function to select: 0, 5s, 30s, 2m, 10m, 30m, 1hr, 3hrs.



1. When device is turned ON, the delay timer will start to count down and turn OFF when the time reach to 0.
2. During delay timer counting period, if pressing the ON button again will extend the timer count time.
3. You can always de-active the delay timer by pressing the OFF button, and the next time turning ON the device the timer will start counting down from the beginning again.

When controlling dimmer device(s), set the load dim level under 0 position first to avoid abnormal outcome.

8. Specifications

Battery:	3V CR2032 Lithium Cell Battery
Radio Frequency:	433.92MHz
Power consumption:	<1W
Environment Temperature:	-10 ~ 35 °C
Range:	up to 50 m indoors (Depends on building materials)
CE Certification:	The CE marked affixed to this product confirms its compliance with the European Directives which apply to the product and in particular its compliance with the harmonized standards and specifications.



Dimension	80 x 80 x 15 mm
Weight:	60 g
Accessory pack enclosed:	2pcs double sided adhesive tape. 2pcs screws.