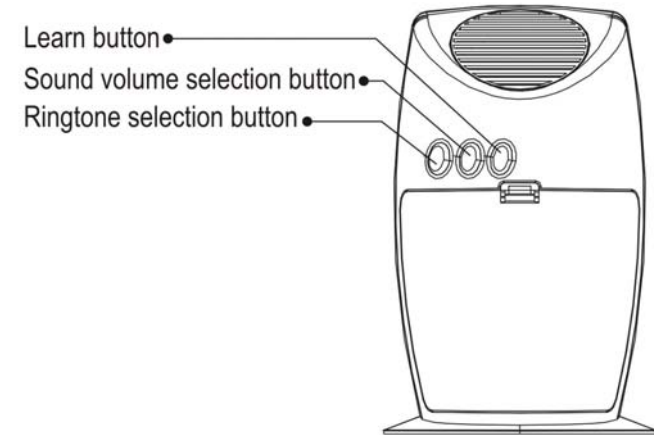
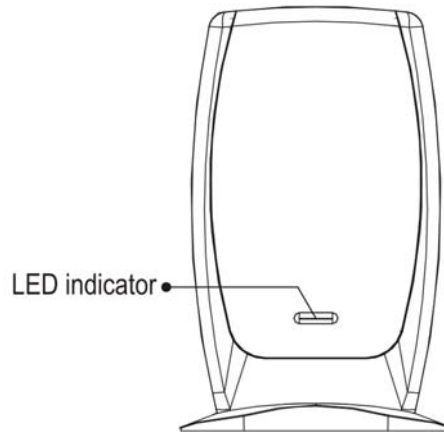
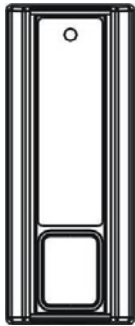


MODEL:

MLR-1105 (DC battery type door chime receiver)

LMLT-711 (push unit door chime transmitter)



FEATURE:

- * 67 million self-learning coding RF wireless operation system. No interference with neighbors.
- * 5 ringtones / 4 sound volume selections (High-Medium-Low-Mute).
- * 4 programmable memories.
- * LED indicator for hearing impaired person.
- * Chime receiver compatible with self-learning coding transmitters, such like LMLT-711 door bell push button unit, or LMDT-609 motion detector and LMST-606 magnetic sensor as alert system.
- * Each transmitter can learn with the door chime via different ringtone as door bell sound or alert sound.
- * Operating distance 200 meters (in open field).
- * Receiver battery life 2 years (base on using fresh Duracell Alkaline battery).

INSTALLATION:

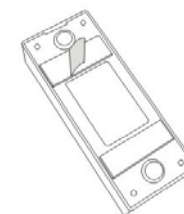
LMLT-711 Transmitter (Bell push unit)

The bell push unit can be attached to the flat wall surface by using either the self adhesive tab or screws provided. To match IP44 standard, LMLT-711 Transmitter must be affixed with LED on top, push button on bottom. Or horizontal placed.

➤ **Self Adhesive strips**

Make sure the surface is free from dirt and grease.

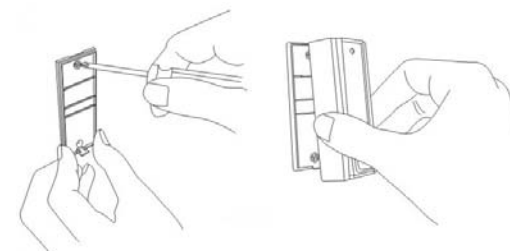
Attach the self adhesive tab to the back cover of the push button unit. Remove the protective strips from the self adhesive tab and push firmly against the wall.



➤ **Mounting the bell push button by screwing**

Unclip the cover from the bell push unit and using the 2 holes on the back of the bell as a template, mark and drill the fixing holes and then attach the bell push using the screws provided.

Close back the front cover to complete the whole push button bell transmitter.



MLR-1105 Receiver (chime)

Stand type door chime can be placed wherever the suitable place for sound clearly hearing or LED indicator clearly visually.

HOW TO SET CODE: Learning Function

- To start, program the Transmitter (bell push unit) with the Receiver (chime unit).
- Firstly choose the desire ringtone.
- Press once on the “Learn” button of the Receiver (chime unit), “Du” sound is heard, LED flashes slowly.
- Then, press the push button of bell push unit LMLT-711 (or slide to “SET” position of button on LMDT-609 or separate parts of LMST-606 as “LEARN” code) to send signal to the receiver chime.
- No matter sound volume is setup at any volume level or mute mode, once the pairing is completed, the receiver will indicate a “Du-Du” sound to confirm, LED light does not flash.
- Although learning process is setup at “Mute” mode, after turning to H-M-L volume level selection, ringtone programmed can still be sounded.
- Selected ringtone and the transmitter are programmed in one of the memory of MLR-1105 at the same time.
- If not process pairing of transmitter and receiver within about 15 seconds after pressing “Learn” button, automatically leaving learning mode after the 15 seconds.
- Repeat procedure with different ringtone for different transmitter setting.
- When 4 memories are fully programmed, receiver will make “Du-Du-Du-Du” sound.

HOW TO DELETE CODE:

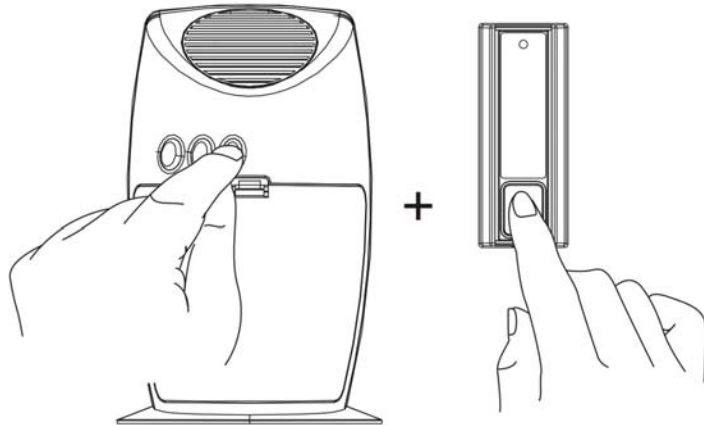
- Delete individual setting

- Press the “Learn” button once on the Receiver (chime unit), “Du” sound is heard, the LED flashes slowly.
- Then, press the push button of bell push unit LMLT-711 (or slide to “DEL” position of button on LMST-609 or “CLOSE” parts of LMST-606 as “DELETE” code) to send signal to the receiver chime.
- No matter sound volume is setup at any volume level or mute mode, once the deletion is completed, the receiver will indicate a “Du-Du” sound to confirm, LED light does not flash.
- Repeat steps to delete single memory from transmitters.

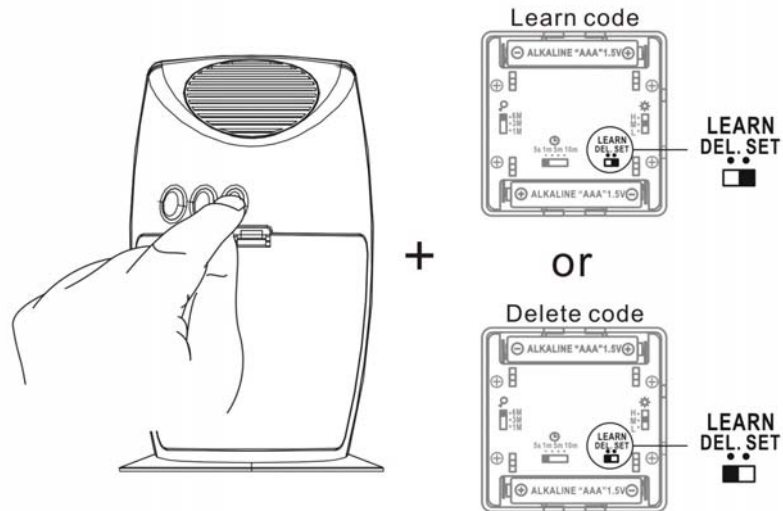
- Delete all memory settings at the same time

- On the Receiver (chime unit) press the “Learn” button, hearing a “Du” sound and holding with the button for about 6 seconds till a second “Du” sound with LED light flashes.
- Release the “Learn” button, and press shortly the “Learn” button again, no matter sound volume is setup at any volume level or mute mode, once the deletion is completed, the receiver will indicate a “Du-Du” sound to confirm, LED light does not flash.
- All memories are deleted once at the same time.

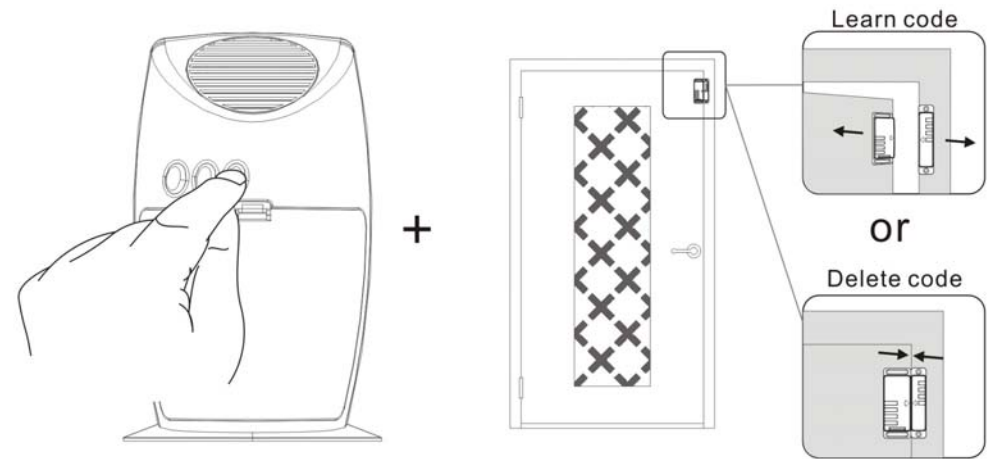
With LMLT-711



With LMDT-609



With LMST-606



Operating transmitters (such like LMLT-711, LMDT-609 and LMST-606) and receiver chime unit:

- If the sound volume is setup at “High”, “Medium” or “Low” level, when chime catches a signal from the paired transmitter and give sound ringing while LED light is at the same time and continuing flashing for about 12 seconds, **the receiver chime will re-act another sound if catching another signal from transmitter upon the prior sound is ended although the LED light flashing is still.**
- If the sound volume is setup at “Mute”, when chime catches a signal from the paired transmitter, the LED light starts to flash for about 12 seconds. **When the receiver catches another signal from transmitter within the 12 seconds, LED light flashing will stop for about 1 second and continue to flash.**
- When pairing the transmitter with MLR-1105, no matter the sound volume is High, Medium ,Low or Mute, it still can be manually adjusted to any sound volume with last ringtone when normal operation.

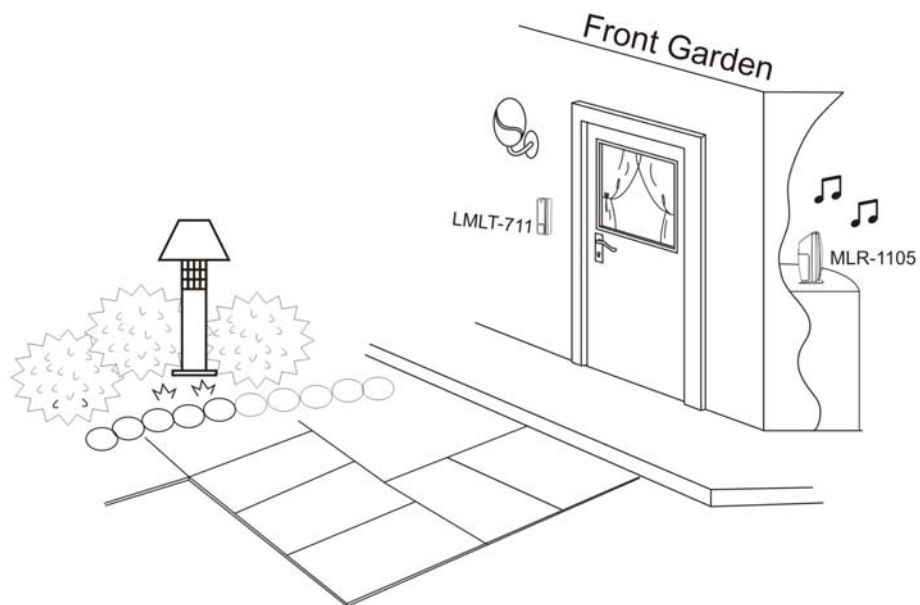
● **APPLICATION IN BELOW EXAMPLE:**

With transmitter:

LMLT-711 (push unit door chime transmitter)

- * Setup with ringtone 1.
- * Fix LMLT-711 on the outside wall.
- * When people push the unit button, the signal transmits to MLR-1105 to make ringtone 1 sounded as door bell.

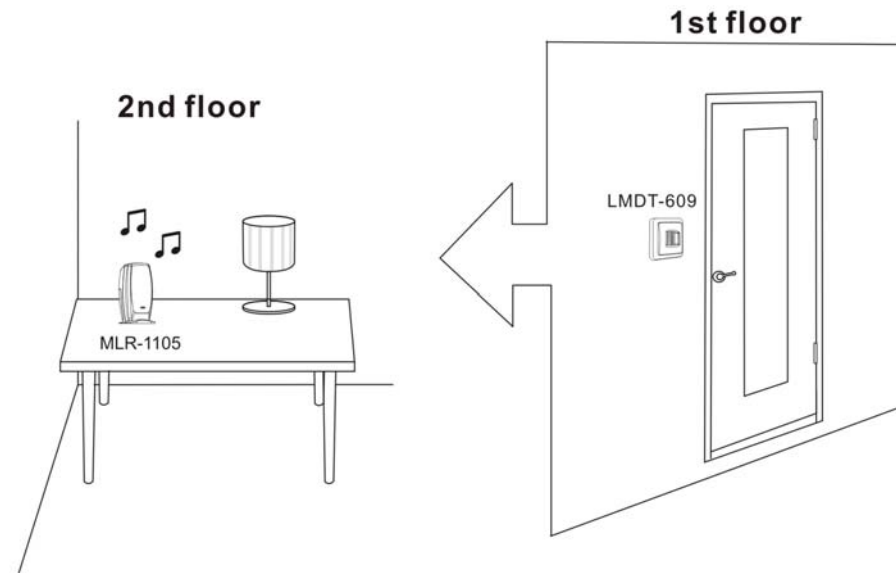
Ringtone 1



LMDT-609 (motion detector transmitter)

- * Setup with ringtone 2.
- * Fix LMDT-609 on the wall outside of the room or at the entrance of the door.
- * Put MLR-1105 in the up-stair room.
- * When people walk inside the house passing through LMDT-609, it detects body movement and sends signal to MLR-1105 to make ringtone 2 sounded as an alert.

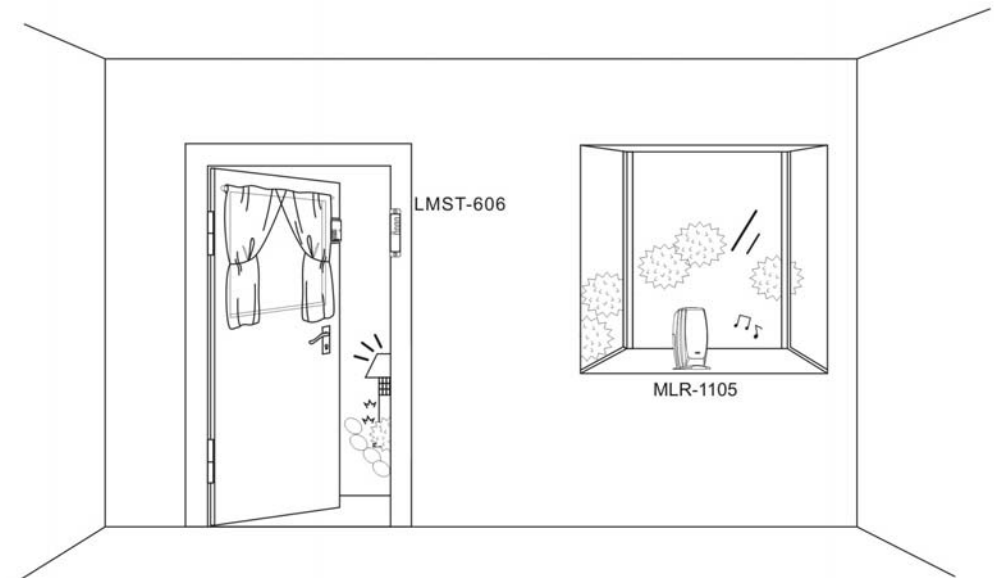
Ringtone 2



LMST-606 (magnetic sensor transmitter)

- * Fix LMST-606 on the door (or on the window).
- * Put MLR-1105 by the window or any places where can clearly hear the sound or see the LED flash indication.
- * When people open or break in the door (or window), detach parts of LMST-606 sending signal to MLR-1105 making ringtone 3 sounded as an alert.

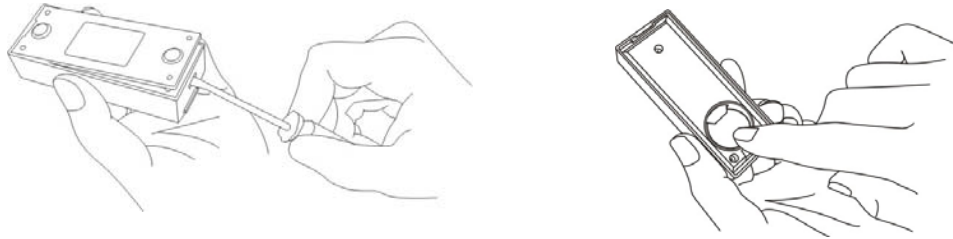
Ringtone 3



CHANGING BATTERY:

Transmitter

- Unclip the front cover from the front of the Transmitter (bell push unit) using a small screw driver.
- Remove the battery and replace using a new fresh “CR2032” battery, making sure the polarity is correct.
- Replace the front cover making sure the clips are correctly aligned and firmly push the case together.



Receiver

- Take off the battery compartment cover.
- Take out the batteries and replace with new fresh AA (1.5V) * 3 Duracell Alkaline batteries .
- Replace battery ready and correct, “Du-Du” sound is heard to confirm.
- Close the battery compartment cover back to the chime receiver completely.



SPECIFICATION

RECEIVER:

Frequency: 433.92MHz

Battery operated: 4.5VDC (AA * 3)

Battery life: 2 years base on using fresh Duracell Alkaline battery

Ringtone : 5 kinds of sound

Sound volume: High – Medium – Low – Mute

Memories: 4 codes

Receiving distance: 200 meters (in open field) while both receiver and transmitter are with full or enough battery power.

TRANSMITTER (LMLT-711):

IP-44 weatherproof approved.

Battery: CR2032 (included)

FAULT FINDING

No Activation: Check the battery level and polarity, replace with new fresh battery if necessary.

Whether 4 memories are full and cannot set another code if code setting has been successful.